



Dr. Aladdin Badawi

stayin' Fit!

Weight Loss on the go:
Strategies for busy

professionals

ISBN: 978-1-300-75525-8

Weight Loss on the Go:

Copy right:

Title: Stayin' fit.

Subtitle: Weight loss on the go

Copy right year: 2025

ISBN: 9781300755258

The above information forms this copyright notice: © 2025 by Aladdin Badawi.

All rights reserved



Table Of Contents

Copy right:	1
Chapter 1: Introduction to Weight Loss on the Go	4
Chapter 2: Intermittent Fasting for Sustainable Weight Loss	12
Chapter 3: Mindful Eating Practices for Weight Management	21
Chapter 4: Low-Carb and Ketogenic Meal Plans	31
Chapter 5: Weight Loss Through Functional Fitness	42
Chapter 6: Healthy Meal Prepping for Weight Loss	54
Chapter 7: Nutrition Coaching for Emotional Eaters	62
Chapter 8: Weight Loss for Busy Professionals	69
Chapter 9: Medical support.	73
Medications:	74
Non - invasive interventions:	76

Weight Loss on the Go:

Intra-gastric balloon:	76
Chapter 10: Interventions.	79
Follow up after bariatric procedures:	87
Chapter 11: Family-Friendly Healthy Weight Loss Strategies	96
Chapter 12: Holistic Approaches to Weight Loss	107
Chapter 13: Conclusion	114

Chapter 1: Introduction to Weight Loss on the Go

Understanding the Busy Professional's Lifestyle

Understanding the busy professional's lifestyle is essential for developing effective weight loss strategies tailored to their unique needs. In today's fast-paced world, professionals often juggle multiple responsibilities, including work, family, and personal commitments. This hectic schedule can lead to unhealthy eating habits, lack of physical activity, and increased stress levels, which are all detrimental to weight management & subsequently to overall health. Recognizing these challenges is the first step toward creating practical solutions that fit seamlessly into their daily routines.

One of the most prevalent issues faced by busy individuals is time scarcity. With limited hours in the day, preparing nutritious meals often takes a backseat to convenience. As a result, many resort to fast food or processed snacks, which can hinder weight loss efforts.

Understanding this reality allows for the introduction of meal prepping and planning strategies. By dedicating a few hours each week to prepare healthy meals in advance, busy professionals can avoid the temptation of unhealthy options and ensure they have nutritious choices readily available.

Weight Loss on the Go:



Mindful eating practices also play a vital role in managing weight for busy professionals. The tendency to eat on-the-go or while multitasking can lead to overeating and poor food choices. Incorporating mindfulness into meals encourages individuals to slow down and savor their food, which can enhance satisfaction and help regulate portion sizes. Simple techniques such as eating without distractions and paying attention to hunger cues can significantly impact weight management, fostering a healthier relationship with food.

Weight Loss on the Go:

Incorporating functional fitness into a busy schedule is another effective strategy for weight loss. This approach emphasizes short, efficient workouts that can be done anywhere, making it easier for professionals to fit exercise into their day. Functional fitness routines, which focus on movements that mimic everyday activities, not only help burn calories but also improve overall strength and endurance. By understanding the importance of physical activity, busy individuals can prioritize fitness without feeling overwhelmed by lengthy gym sessions.



Weight Loss on the Go:

Finally, addressing emotional eating is crucial for sustainable weight loss among busy professionals. Stress, fatigue, and emotional challenges can lead to unhealthy eating patterns, often as a means of coping. Nutrition coaching that focuses on emotional triggers can empower individuals to make healthier choices, even during high-pressure situations. By adopting a holistic approach that considers mental health alongside physical well-being, busy professionals can cultivate lasting habits that support both weight loss and overall wellness.

Epi-genetics & Sustainable Weight Loss:

Recently, epigenetic science (epi means on top) revealed molecular switches on the top of genes that regulate many physiological mechanisms, turning them up or down.

Many important life changes can be affected, such as puberty, aging, weight gain, or loss.

Amazingly, they are rewritten every day by writer & eraser enzymes in a temporary, not a permanent form, mainly depending on how you eat!

So, food can actually unlock potentials in your genes, change the daily activities, how you handle stress, not to mention dealing with obesity.

Weight Loss on the Go:

Epigenetics refers to changes in gene expression that don't alter the DNA sequence itself, but instead act as "switches" turned on or off by lifestyle and diet.

It explains why weight management is biologically challenging and often results in the frustrating "yo-yo" effect.

Recent research indicates that obesity leaves a cellular, "epigenetic memory" in your fat cells. Even after you successfully lose weight, these altered cells can remain hyper-primed to absorb calories and store fat, which contributes to rapid weight regain.

However, because epigenetic tags are dynamic, they can be positively influenced.

Here is how you can leverage epigenetics for sustainable weight loss:

1. Optimize Your Diet (Epi-Nutrition) Certain nutrients act as "epi-nutrients" that help switch off genes associated with fat storage and inflammation.

Polyphenols & Antioxidants: Found in green tea, berries, and curcumin, these compounds can modify histone structures to inhibit weight gain.

Methyl Donors: Foods like leafy greens, broccoli, and eggs provide methyl groups that regulate DNA methylation.

Fiber: High-fiber diets have been shown to positively influence the expression of metabolic genes and promote healthy body composition.

Weight Loss on the Go:

2. Engage in Consistent Exercise Physical activity triggers epigenetic changes that improve insulin sensitivity and boost fat burning.

Studies show that consistent exercise (such as daily jogging) can actively offset the genetic risks associated with obesity, modifying how your muscle and fat cells process energy.

3. Prioritize Sleep & Manage Stress.

Environmental stressors—such as sleep deprivation and chronic anxiety—leave negative epigenetic imprints that increase cortisol and promote weight gain. Maintaining a strict circadian rhythm and reducing stress help maintain healthy gene expression tied to metabolism.

Weight Loss on the Go:

The importance of sustainable weight loss extends beyond merely shedding pounds; it encompasses the development of lifelong habits that promote overall health and well-being. For busy individuals—whether parents, adolescents, clerks, housewives, or students—sustainable weight loss strategies must be practical and adaptable to fit hectic lifestyles. Approaches such as intermittent fasting can serve as a flexible eating pattern that allows for weight management while accommodating varying schedules. This method helps individuals avoid the pitfalls of restrictive diets, which often lead to yo-yo dieting and frustration. By adopting intermittent fasting, individuals can maintain their energy levels and focus while still working towards their weight loss goals.

Mindful eating practices also play a crucial role in achieving sustainable weight loss. This approach encourages individuals to pay attention to their hunger cues, savor their food, and enjoy the eating experience without distractions. For busy parents and professionals, this can be a game-changer, as it fosters a healthier relationship with food and reduces emotional eating. By practicing mindfulness, individuals can learn to recognize when they are truly hungry and when they are eating out of boredom or stress, leading to better food choices and portion control.

Weight Loss on the Go:

Another effective strategy is incorporating low-carb and ketogenic meal plans into daily routines. These dietary approaches can facilitate weight loss by promoting fat as a primary fuel source, which may lead to increased energy and reduced cravings. For families, adapting these meal plans can be straightforward with careful planning and meal prepping. Preparing healthy, family-friendly meals in advance not only saves time but also ensures that nutritious options are readily available, making it easier for everyone to stick to their weight loss goals.

Functional fitness provides an engaging way to integrate exercise into busy lives, focusing on movements that mimic everyday activities. This approach is particularly beneficial for parents and professionals who may struggle to find time for traditional workouts. By incorporating functional movements into daily routines, individuals can improve their strength, balance, and flexibility while burning calories. Additionally, these workouts can be family-friendly, encouraging children and partners to participate in physical activity together, thereby fostering a supportive environment for healthy living.

Weight Loss on the Go:

Lastly, addressing the emotional aspects of eating through nutrition coaching can significantly enhance sustainable weight loss efforts. Many individuals struggle with emotional eating, which can derail progress and lead to unhealthy habits. By working with a nutrition coach, individuals can develop strategies to cope with stress and emotions without turning to food. This holistic approach not only targets weight loss but also emphasizes mental health, ensuring that individuals feel supported throughout their journey. For busy professionals, implementing these strategies can lead to a healthier lifestyle that is both sustainable and achievable, ultimately promoting lasting well-being for themselves and their families.

Chapter 2: Intermittent Fasting for Sustainable Weight Loss

Overview of Intermittent Fasting

Intermittent fasting has emerged as a popular dietary strategy for those seeking sustainable weight loss, particularly among busy professionals and families. This eating pattern alternates between periods of eating and fasting, allowing individuals to streamline their meal times without the need for constant calorie counting. For parents, students, and busy professionals alike, intermittent fasting can simplify meal preparation and reduce the stress of planning daily meals, making it a practical choice for weight management.

Weight Loss on the Go:

At its core, intermittent fasting focuses on when to eat rather than what to eat, promoting a mindful approach to consumption. The most common methods include the 16/8 method, where individuals fast for 16 hours and eat during an 8-hour window, and the 5:2 method, which involves eating normally for five days of the week while limiting calorie intake on two non-consecutive days. These eating patterns can easily fit into the hectic schedules of parents and professionals, allowing for flexibility and reducing the temptation to snack mindlessly throughout the day.

Research suggests that intermittent fasting can lead to significant weight loss and improve metabolic health. By giving the body a break from constant food intake, it may enhance fat burning and improve insulin sensitivity. For individuals managing emotional eating or looking for a holistic approach to weight loss, intermittent fasting can provide a structured framework that encourages healthier eating habits and fosters a greater awareness of hunger cues. This is particularly beneficial for adolescents and students who are navigating their relationship with food during critical developmental years.

Weight Loss on the Go:

Incorporating intermittent fasting into a busy lifestyle can also promote healthier meal choices. With fewer meals to prepare, individuals can focus on nutrient-dense foods that support overall health. Families can embrace this approach by planning meals together during eating windows, ensuring that everyone is engaged with healthy options that align with their weight loss goals.

Additionally, pairing intermittent fasting with low-carb or ketogenic meal plans can enhance its effectiveness, providing sustained energy levels and reducing cravings for unhealthy snacks.

Ultimately, intermittent fasting serves as a viable strategy for weight loss that accommodates the diverse needs of busy individuals and families. By fostering mindful eating practices and allowing for flexibility in meal timing, it empowers people to take control of their dietary habits without the stress of rigid dieting. Embracing this approach, along with supportive nutrition coaching and functional fitness, can pave the way for a healthier lifestyle that promotes lasting weight loss and overall well-being.

Weight Loss on the Go:

Different Methods of Intermittent Fasting

Intermittent fasting has emerged as a popular strategy for weight loss and overall health, offering a flexible approach that can fit seamlessly into the busy lives of parents, students, and professionals alike. The core principle of intermittent fasting revolves around cycling between periods of eating and fasting, allowing the body to enter a state of fat burning while potentially improving metabolic health. This method is not only effective for weight management but also encourages mindful eating practices that can lead to better food choices and a healthier relationship with food.

One of the most common methods of intermittent fasting is the **16/8** approach, where individuals fast for 16 hours and eat within an 8-hour window. This method is particularly appealing to busy professionals, as it often allows for a family-friendly schedule. For instance, one can skip breakfast and have their first meal at noon, enjoying dinner before 8 PM. This format can help regulate insulin levels and promote fat loss while still enabling individuals to enjoy social meals with family and friends, making it a sustainable choice for weight loss.

Video for weight loss & fasting:

https://youtu.be/ahnl7GaV_rU?si=_p7EiDxmPFFXNHlk

https://youtu.be/ahnl7GaV_rU?si=_p7EiDxmPFFXNHlk

Weight Loss on the Go:

Another popular method is the **5:2** diet, which involves eating normally for five days of the week while restricting calorie intake to around 500-600 calories on two non-consecutive days. This approach can be beneficial for those who struggle with daily fasting or find it challenging to adhere to strict eating windows. The flexibility of the 5:2 diet allows for mindful eating during regular days, enabling individuals to plan low-carb or ketogenic meals on fasting days without feeling deprived. It can be an excellent option for busy parents or professionals who want to maintain their energy levels while still achieving their weight loss goals.

Alternate-day fasting is another method that has gained traction, where individuals alternate between eating normally one day and significantly reducing calorie intake the next. This approach can be particularly effective for students or housewives who have varying schedules and need a method that can be adapted to their lifestyle. While it might seem daunting at first, the alternating nature of this method can help instill a sense of routine and discipline around food choices, promoting healthy meal prepping practices and encouraging nutrient-dense meals on eating days.

Video link:

https://youtu.be/-hSERcBUsgY?si=yCiZlBwX_egXNCos

Weight Loss on the Go:

Lastly, the warrior diet offers a different take on intermittent fasting, allowing individuals to eat small amounts of raw fruits and vegetables during the day while consuming a large meal at night. This method can cater to emotional eaters by emphasizing the importance of quality food and mindful consumption during the evening meal. By aligning with the body's natural rhythms, the warrior diet can help foster a holistic approach to weight loss that not only focuses on physical health but also incorporates mental well-being, making it suitable for a diverse audience seeking sustainable weight management strategies.

Benefits of Intermittent Fasting for Busy Schedules

Intermittent fasting (IF) has gained popularity as an effective strategy for weight management, particularly among busy individuals who juggle multiple responsibilities. One of the primary benefits of IF is its flexibility, which allows people to integrate fasting into their lifestyles without the need for extensive meal planning. For parents and professionals with hectic schedules, this can mean fewer meals to prepare and less time spent worrying about caloric intake. The simplicity of IF can help reduce the stress of maintaining a healthy diet while managing various commitments.

Another benefits of IF is on immune system, as it helps to boost this mechanism that acts as prophylactic against and even during an infection

Video representing role of fasting on immunity:

https://youtu.be/qj57V3NP4Ds?si=j955_nCGkXFNdJBy

https://youtu.be/qj57V3NP4Ds?si=j955_nCGkXFNdJBy

Weight Loss on the Go:

Another significant advantage of intermittent fasting is its potential to enhance focus and productivity. Many individuals report increased mental clarity and energy during fasting periods, which can be particularly beneficial for students and professionals who need to stay sharp throughout the day. This cognitive boost can lead to improved performance in both academic and work-related tasks. By aligning fasting windows with busy periods, individuals can harness these benefits to maximize their efficiency while also working toward their weight loss goals.

Intermittent fasting also encourages mindful eating practices, which can be particularly advantageous for those who often find themselves eating on the go. When individuals adopt an IF schedule, they are prompted to be more intentional about their food choices during eating windows. This awareness can help combat mindless snacking and promote healthier eating habits, making it easier to manage weight sustainably. Parents can model these mindful practices for their children, creating a family culture centered around healthy eating and conscious decision-making.

Weight Loss on the Go:

Interesting studies also show that fasting can enhance **autophagy** (killing of wasted or cancer cells by the natural killer cells in blood), so longer periods of fasting have an **anti cancer effect**.

Video for explaining:

<https://youtu.be/6nk76VcGMII?si=3fhf6vBsOFVkJNkyN>

<https://youtu.be/6nk76VcGMII?si=3fhf6vBsOFVkJNkyN>

For those interested in low-carb and ketogenic meal plans, intermittent fasting can complement these dietary approaches effectively. When combined with a low-carb diet, IF can enhance fat burning and improve metabolic health. Busy individuals can benefit from simplified meal preparation, as fasting allows for fewer meals to be planned and cooked. This synergy between IF and ketogenic principles can facilitate weight loss while accommodating the hectic lifestyles of students, working parents, and professionals.

Weight Loss on the Go:

Lastly, intermittent fasting can support emotional wellness, which is particularly relevant **for emotional eaters**. By establishing a structured eating routine, individuals can create a healthier relationship with food, reducing the likelihood of emotional eating triggered by stress or fatigue. This holistic approach to weight loss not only aids in physical transformation but also fosters mental health, making it a comprehensive strategy for busy individuals striving for sustainable weight management.

Video link for an experience for 30 days:

https://youtu.be/Pod2w_jPVYs?si=jOQh_udt8We9027-

https://youtu.be/Pod2w_jPVYs?si=jOQh_udt8We9027-

Chapter 3: Mindful Eating Practices for Weight Management

Weight Loss on the Go:

What is Mindful Eating?

Mindful eating is a practice that emphasizes being fully present during meals and snacks, allowing individuals to connect with their food on a deeper level. This approach encourages awareness of the sensory experience of eating, including the taste, texture, and aroma of food, as well as one's feelings and thoughts surrounding it. For busy professionals, parents, and students, the act of eating often becomes a rushed task, overshadowed by distractions such as phones, television, or work. By incorporating mindfulness into eating habits, individuals can cultivate a healthier relationship with food, which can lead to more conscious choices and ultimately support weight management goals.



Weight Loss on the Go:



At its core, mindful eating involves slowing down and paying attention to hunger and satiety cues. This practice fosters an understanding of when to eat based on physical signals rather than emotional triggers or external pressures. For example, many people tend to eat out of boredom or stress, which can lead to overeating.

Weight Loss on the Go:

By recognizing these emotional eating patterns, individuals can make more informed decisions about when and what to eat. This is especially important for busy professionals who often find themselves eating on the go or skipping meals, leading to unhealthy eating patterns and weight gain.

Mindful eating also encourages savoring food, which can enhance the enjoyment of meals. When people take the time to appreciate their food, they are often satisfied with smaller portions. This can be particularly beneficial for those following low-carb or ketogenic meal plans, where the quality of food choices is crucial. By focusing on the experience of eating, individuals may find they are more inclined to choose nutrient-dense foods that align with their health goals, rather than opting for quick, processed snacks that provide little nutritional value.

Weight Loss on the Go:

Incorporating mindful eating practices into daily routines can be seamlessly integrated with other weight loss strategies, such as intermittent fasting and meal prepping. For instance, when planning meals in advance, families can engage in discussions about food choices and the importance of nutrition, fostering a collective commitment to healthy eating. This not only supports weight loss for busy professionals but also promotes family-friendly habits that can benefit all members, including adolescents and children. In this way, mindful eating becomes a holistic approach that intertwines with various aspects of a healthy lifestyle.

Ultimately, mindful eating serves as a powerful tool for sustainable weight loss and overall well-being. By recognizing the connection between mental health and eating habits, individuals can address emotional eating and develop healthier coping mechanisms. This approach aligns with the goal of achieving weight loss through functional fitness and nutrition coaching, making it an essential component for anyone looking to improve their relationship with food while managing a busy lifestyle. By embracing mindful eating, individuals can transform their eating habits, leading to lasting change and a healthier future.

Weight Loss on the Go:



Techniques for Practicing Mindful Eating

Techniques for practicing mindful eating can significantly enhance your approach to weight management, especially for busy individuals juggling multiple responsibilities. One effective method is to create a designated eating environment. This means choosing a specific spot for meals, free from distractions like television, smartphones, or computers. By setting aside a quiet space, you can focus entirely on your food, allowing you to appreciate the flavors and textures while fostering a more intentional eating experience.

Weight Loss on the Go:

Another valuable technique is to implement the practice of slowing down during meals. Aim to chew each bite thoroughly and savor the food's taste. This practice not only enhances the enjoyment of your meal but also aids digestion and helps you recognize your body's hunger and fullness cues. Taking time to pause between bites allows your brain to catch up with your stomach, reducing the likelihood of overeating—a common challenge for busy professionals and families alike.

Portion control plays a crucial role in mindful eating. Serving food in smaller dishes can create the illusion of a fuller plate, encouraging you to eat less while still feeling satisfied. Additionally, consider preparing and plating your meals with intent, as this can enhance your appreciation for the food. By being conscious of portion sizes and presentation, you can cultivate a more mindful relationship with your meals, which is especially important for those managing weight through intermittent fasting or low-carb diets.

Weight Loss on the Go:

Incorporating gratitude into your eating routine can also promote mindfulness. Before starting a meal, take a moment to reflect on the effort that went into preparing it, from sourcing ingredients to cooking. Acknowledging this process can foster a deeper connection with your food and improve your overall eating experience. This practice is particularly beneficial for emotional eaters, as it helps shift focus from stress or anxiety to a more positive and appreciative mindset.

Lastly, keeping a food journal can enhance your mindful eating practice. Documenting what you eat, along with your feelings and hunger levels, helps you become more aware of your eating habits. This awareness can lead to healthier choices and a better understanding of your body's needs. For busy professionals and families, this technique not only provides insights into eating patterns but also encourages accountability, making it easier to stay on track with weight loss goals while embracing a holistic approach to health.

Overcoming Emotional Eating Through Mindfulness

Emotional eating is a common challenge faced by many individuals, including busy professionals, parents, and adolescents. It often emerges as a response to stress, anxiety, or even boredom, leading to a cycle of overeating that can hinder weight loss efforts. Mindfulness offers a powerful tool in breaking this cycle by encouraging individuals to develop a greater awareness of their thoughts, feelings, and bodily sensations around food. By practicing mindfulness, individuals can learn to identify emotional triggers that lead to unhealthy eating habits, allowing them to make more conscious choices about when and what to eat.

One effective approach to incorporating mindfulness into daily life is through mindful eating practices. This involves slowing down and paying full attention to the eating experience, which can help individuals reconnect with their hunger and satiety cues. For busy professionals, this might mean setting aside specific times for meals without distractions, such as phones or television. By focusing solely on the eating experience, individuals can savor their food, making the meal more satisfying and reducing the likelihood of overeating. This practice can be particularly beneficial for families, as it encourages shared meals and promotes healthy eating habits among children.

Weight Loss on the Go:

Intermittent fasting can also be integrated with mindfulness to create a sustainable weight loss strategy. By establishing specific eating windows, individuals can cultivate a heightened awareness of their hunger signals and emotional states. During fasting periods, practicing mindfulness can help individuals cope with cravings and emotional triggers that arise. Instead of reaching for food during moments of stress, individuals can engage in mindfulness techniques, such as deep breathing or meditation, to address their feelings. This shift in response can lead to healthier coping mechanisms and a more balanced relationship with food.

Nutrition coaching tailored for emotional eaters can further enhance the practice of mindfulness in weight management. A coach can help individuals explore their emotional connections to food and develop strategies to navigate these feelings without resorting to eating. This might include creating a personalized meal plan that aligns with low-carb or ketogenic diets while incorporating mindfulness techniques. Coaches can also provide support and accountability, helping individuals stay committed to their goals while practicing self-compassion and understanding.

Weight Loss on the Go:

Ultimately, overcoming emotional eating through mindfulness requires a holistic approach that encompasses mental health, nutrition, and lifestyle changes. By integrating mindful eating practices into daily routines, busy professionals, parents, and students can foster a more positive relationship with food. This can lead to sustainable weight loss and improved overall well-being. Embracing mindfulness not only addresses the immediate challenges of emotional eating but also paves the way for long-term health and resilience in the face of life's stressors.



Chapter 4: Low-Carb and Ketogenic Meal Plans

Understanding Low-Carb and Ketogenic Diets

Understanding low-carb and ketogenic diets involves recognizing the fundamental principles that differentiate them from traditional eating patterns. Low-carb diets focus on reducing carbohydrate intake to encourage the body to burn fat for energy. This approach can lead to improved blood sugar levels, reduced hunger, and increased fat loss. On the other hand, ketogenic diets take this a step further by drastically limiting carbohydrates and increasing fat intake to induce a state of ketosis, where the body becomes highly efficient at burning fat for fuel. Both diets emphasize whole, nutrient-dense foods, making them appealing for busy individuals seeking to make healthier choices without extensive meal prep.

For parents and busy professionals, understanding how to implement low-carb and ketogenic diets can be crucial. These diets do not require complex meal planning; rather, they can be adapted to fit a variety of lifestyles. Simple swaps, such as replacing bread with leafy greens or pasta with spiralized vegetables, can help maintain a low-carb intake without sacrificing flavor or satisfaction. Quick and easy recipes can be crafted with minimal ingredients, allowing families to enjoy nutritious meals together while promoting healthy eating habits.

Weight Loss on the Go:

Adolescents and students looking to manage their weight might find low-carb and ketogenic diets beneficial as they navigate busy schedules and social pressures. These diets can help regulate energy levels and improve concentration by stabilizing blood sugar.

Additionally, learning to make informed food choices and develop mindful eating practices can empower young people to take control of their nutrition. Encouraging these habits early on can lead to lifelong benefits, fostering a healthier relationship with food.

Video Link for how to do keto diet & its effect:

<https://youtu.be/InvnD77Apyc?si=5o195tpQvEpWtVWI>

<https://youtu.be/InvnD77Apyc?si=5o195tpQvEpWtVWI>

Mindful eating practices can complement low-carb and ketogenic diets by promoting awareness of hunger and fullness cues. Busy individuals often eat on the go, which can lead to overeating or poor food choices. By incorporating mindfulness into meal times, families can create a more intentional eating environment. This means paying attention to the textures and flavors of food, as well as recognizing emotional triggers that may lead to unnecessary snacking. Such practices can enhance the overall success of weight loss efforts while fostering a positive mindset toward food.

Weight Loss on the Go:

Lastly, the holistic approach to weight loss, which includes mental health considerations, is essential for long-term success with low-carb and ketogenic diets. Emotional eating can often derail weight loss efforts, making nutrition coaching a valuable resource. For families, this means establishing a supportive environment where open discussions about food and feelings can occur. By understanding the psychological aspects of eating, individuals can better navigate their dietary choices, leading to sustainable weight loss and improved overall well-being. This comprehensive strategy not only addresses physical health but also nurtures mental resilience, making it an ideal approach for busy lifestyles.

Quick and Easy Low-Carb Recipes

In the hustle and bustle of daily life, finding time to prepare healthy meals can be challenging, especially for busy parents, students, and professionals. Low-carb recipes offer a practical solution for those looking to manage their weight while still enjoying delicious food. These meals can be prepared quickly and require minimal ingredients, making them ideal for anyone trying to balance a hectic schedule with nutritional needs. By focusing on simple, wholesome ingredients, you can create satisfying dishes that align with your weight loss goals.

Weight Loss on the Go:

One popular low-carb recipe is the **zucchini noodle stir-fry**. This dish replaces traditional pasta with spiralized zucchini, making it a nutritious and low-calorie option. Simply sauté sliced bell peppers, onions, and your choice of protein, such as chicken or tofu, in a tablespoon of olive oil. Add the zucchini noodles and cook for another few minutes until they soften. Season with soy sauce or your favorite spices, and you have a quick meal that is both filling and low in carbohydrates.



Weight Loss on the Go:

This recipe is not only easy to make but also allows for variations based on what you have on hand, making it adaptable for families with varying tastes.



Weight Loss on the Go:

Another quick option is the **egg and avocado** breakfast bowl. Start by scrambling a couple of eggs in a non-stick skillet. While the eggs are cooking, slice half an avocado and prepare any additional toppings you enjoy, such as salsa, cheese, or spinach. Once the eggs are ready, combine them with the avocado and toppings in a bowl. This meal is perfect for busy mornings, providing a good source of healthy fats and protein to keep you energized throughout the day. It also fits well within the principles of mindful eating, allowing you to savor each bite and start your day on a positive note.

For a satisfying **lunch**, consider making a **lettuce wrap filled with turkey**, cheese, and your favorite vegetables. Use large lettuce leaves as a base and layer sliced turkey, cheese, tomatoes, and cucumbers. Drizzle with a little mustard or a low-carb dressing for added flavor. These wraps are portable and can be made in under ten minutes, perfect for those who need to eat on the go. They are also family-friendly, allowing for customization based on individual preferences, making it easier to encourage healthy eating habits among children and adolescents.

Weight Loss on the Go:



Weight Loss on the Go:

Lastly, a low-carb snack option that is both quick and nutritious is a Greek yogurt parfait. Use plain, unsweetened Greek yogurt as a base, then layer in low-carb fruits such as berries or nuts for added texture and flavor. This snack not only satisfies your sweet cravings but also provides protein and probiotics, contributing to overall health.

Preparing these parfaits in advance can save time during busy days, allowing you to grab a healthy snack without resorting to processed options. With these quick and easy low-carb recipes, managing your weight can become more achievable without sacrificing taste or convenience.

Tips for Maintaining a Ketogenic Lifestyle on the Go

Maintaining a ketogenic lifestyle while juggling a busy schedule can be a challenge, but with the right strategies, it is entirely achievable. First, planning is essential for success. Take time each week to prepare a meal plan that aligns with your ketogenic goals. Incorporate a variety of low-carb foods, such as **leafy greens, avocados, and healthy fats like olive oil or coconut oil**. By mapping out your meals and snacks, you reduce the likelihood of impulse eating, which often leads to non-ketogenic choices. Having a clear plan not only simplifies grocery shopping but also helps you stay focused on your dietary commitments.

Weight Loss on the Go:

When you're on the go, convenience is key. Stock your kitchen with ketogenic-friendly snacks that you can easily grab when hunger strikes. Options like **nuts, cheese sticks, hard-boiled eggs, and low-carb protein bars** are portable and satisfying. Additionally, consider investing in a good-quality insulated lunch bag to keep your meals fresh. Preparing meals in advance is a smart way to ensure you have nutritious options readily available. Consider making large batches of keto-friendly dishes that can be portioned out for lunches or dinners throughout the week.

Eating out is often a challenge for those following a ketogenic diet, but it doesn't have to derail your efforts. Familiarize yourself with the menu options at your favorite restaurants and identify low-carb alternatives. Many establishments are accommodating and will adjust dishes to fit your dietary needs, such as swapping out bread for a salad or asking for sauces on the side. Don't be afraid to ask questions and request modifications. This proactive approach not only helps you stick to your meal plan but also encourages restaurants to be more aware of dietary preferences.

Weight Loss on the Go:

Mindful eating practices can significantly enhance your ability to maintain a ketogenic lifestyle, especially when you are busy. Take the time to savor each bite and listen to your body's hunger cues. By eating slowly and thoughtfully, you are more likely to enjoy your meals, feel satisfied, and avoid overeating. When dining with family or friends, engage in conversations that shift the focus away from food, making the experience more about connection than consumption. This practice can be particularly useful in social situations where the temptation to indulge in high-carb foods is prevalent.

Finally, consider the role of community and support in your ketogenic journey. Engage with online forums, local groups, or social media communities where you can share experiences, recipes, and tips with others who understand the challenges of maintaining a ketogenic lifestyle. This support network can provide valuable insights and encouragement, making it easier to navigate social gatherings and busy days. Remember, adopting a ketogenic lifestyle is not just a diet; it's a holistic approach that encompasses physical, mental, and emotional well-being, helping you achieve sustainable weight loss while balancing the demands of everyday life.

Weight Loss on the Go:



Life style holistic approach to overcome bad food habits.

Chapter 5: Weight Loss Through Functional Fitness

The Concept of Functional Fitness

The concept of functional fitness revolves around exercises and activities that enhance the body's ability to perform everyday tasks. This approach goes beyond traditional workouts focused solely on aesthetics, emphasizing movements that mimic daily life. For busy professionals, parents, and students, integrating functional fitness into their routines can lead to improved strength, flexibility, and balance, facilitating better performance in both personal and professional settings. By focusing on functional movements, individuals can work towards sustainable weight loss while also gaining practical benefits that enhance their overall quality of life.

Functional fitness exercises typically involve multiple muscle groups and joints working together, which can lead to increased efficiency and reduced risk of injury.

Common examples include squats, lunges, push-ups, and core stabilization exercises. These movements train the body to work as a cohesive unit, making it easier to perform daily activities such as lifting grocery bags, playing with children, or even sitting at a desk for extended periods. For parents and busy professionals, this means not only burning calories but also improving their ability to manage the physical demands of their lifestyles without experiencing fatigue or discomfort.

Weight Loss on the Go:



Incorporating functional fitness into a busy schedule doesn't require hours at the gym. Short, high-intensity workouts can be effective and easily fit into a hectic day.

Weight Loss on the Go:

Parents can engage in family-friendly workouts that involve their children, turning exercise into a fun and bonding experience.

Students can utilize bodyweight exercises or quick routines that can be performed in a dorm room or backyard. This adaptability makes functional fitness an appealing option for those juggling multiple responsibilities, as it allows for effective weight management without sacrificing time.

Mindful eating practices complement functional fitness by fostering a more intentional relationship with food. As individuals become more aware of their eating habits, they can better align their nutritional choices with their fitness goals. Incorporating low-carb or ketogenic meal plans can enhance energy levels for workouts, while meal prepping ensures that healthy options are readily available, reducing the temptation to opt for less nutritious convenience foods. This holistic approach enables families and busy individuals to create a supportive environment that promotes both physical activity and healthy eating.

Weight Loss on the Go:

A proven efficacy regimen is skipping meals and not to eat except when hungry, upon meal don't reach extent of fullness. This way is difficult but very effective.

This actually can increase metabolism due to various mechanisms. It can be easier if done after low carbohydrates diet.

video to explain:

https://youtu.be/AiPi3_ibTqQ?si=IAiFVcTOha4IyGqn

https://youtu.be/AiPi3_ibTqQ?si=IAiFVcTOha4IyGqn

Ultimately, functional fitness serves as a cornerstone for sustainable weight loss and improved health. By embracing exercises that translate into real-life benefits, individuals can enhance their physical capabilities while simultaneously shedding excess weight. This strategy, combined with mindful eating and nutrition coaching, empowers busy professionals, parents, and students to achieve their health goals without the need for drastic lifestyle changes or restrictive diets. In doing so, they cultivate a balanced approach to fitness and nutrition that supports long-term wellness and vitality.

Quick Workouts for Busy Professionals

In today's fast-paced world, busy professionals often struggle to find time for regular exercise. However, incorporating quick workouts into a daily routine can significantly impact overall health and weight management. These workouts can be tailored to fit into tight schedules, requiring only a short commitment of time while still delivering effective results. Whether you are a parent juggling multiple responsibilities, a student managing coursework, or a professional with a demanding job, there are numerous strategies to ensure that fitness remains a priority.

High-Intensity Interval Training (HIIT) is one of the most efficient forms of exercise for busy individuals, as it combines short bursts of intense activity with brief rest periods. A typical HIIT session can last anywhere from 10 to 30 minutes and can be done with little to no equipment. This training method is effective for burning calories and improving cardiovascular health. For instance, a simple routine might include 30 seconds of sprinting followed by 30 seconds of walking, repeated for 10 minutes. Incorporating HIIT a few times a week can lead to significant improvements in physical fitness without consuming large amounts of time.

Weight Loss on the Go:

This can be done with some mistakes. Try to avoid stressful exercises that may affect your heart and give more time to fully recover in between exercises. Echocardiograms and cardiac stress tests done before this kind of effort are mandatory, can support and compose the exercise needed to be non-harmful for the heart while beneficial for weight loss, with less cardiac overload.

Video link for what to avoid during these exercises:

https://youtu.be/i_4C8ecUMDk?si=dbD82ercCdpKTmXN

https://youtu.be/i_4C8ecUMDk?si=dbD82ercCdpKTmXN

Weight Loss on the Go:



Bodyweight exercises are another excellent option for those with limited schedules. These exercises, which include push-ups, squats, and lunges, can be performed anywhere, making them convenient for busy professionals

Weight Loss on the Go:

A quick 15-minute bodyweight circuit can elevate heart rates and engage multiple muscle groups. For example, performing a set of squats, followed by push-ups and planks, can create a well-rounded workout that targets strength and endurance. The flexibility of bodyweight workouts allows individuals to fit them into their day, whether at home, in the office, or even during a break.

In addition to traditional workouts, incorporating movement throughout the day can also be beneficial for weight management. Simple changes, like taking the stairs instead of the elevator, walking during lunch breaks, or standing while on phone calls, can accumulate significant physical activity over time. These small adjustments not only contribute to daily step counts but also promote a more active lifestyle without requiring dedicated workout sessions. Engaging in these micro-workouts can help busy professionals maintain energy levels and support weight loss efforts.

Weight Loss on the Go:

Finally, mindful movement practices such as yoga or Pilates can be particularly effective for busy individuals seeking to balance physical fitness with mental well-being. Even short sessions of 10 to 20 minutes can enhance flexibility, reduce stress, and improve focus. These practices encourage mindfulness, allowing participants to connect with their bodies and promote a holistic approach to health.

Incorporating such mindful workouts into a weekly schedule can help professionals manage stress while contributing to their physical fitness goals. By prioritizing quick and efficient workouts, busy individuals can achieve sustainable weight loss and maintain a healthier lifestyle amidst their hectic routines.

Incorporating Movement into Daily Routines

Incorporating movement into daily routines is essential for busy individuals seeking sustainable weight loss and improved health. For parents, adolescents, clerks, housewives, and students, the challenge often lies in finding time amidst packed schedules. However, integrating physical activity into everyday tasks can be both simple and effective. Small changes, such as taking the stairs instead of the elevator or opting for a brisk walk during lunch breaks, can accumulate to provide significant health benefits. These activities not only burn calories but also enhance mood and energy levels, making them valuable components of a weight loss strategy.

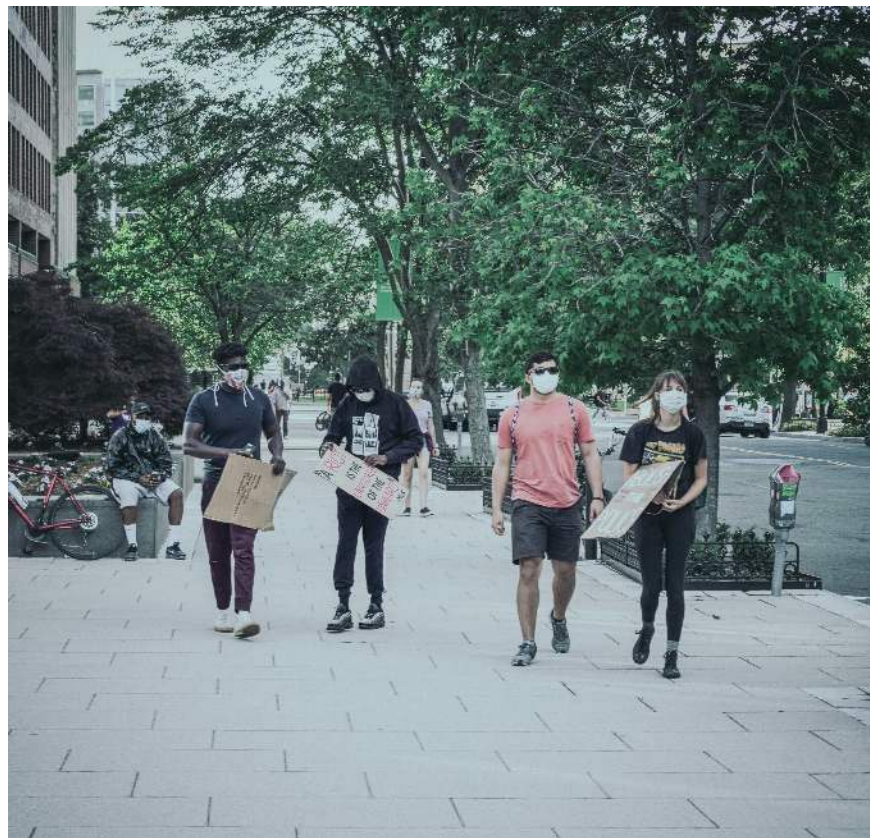
Weight Loss on the Go:

Mindful movement is another approach that complements daily routines, allowing individuals to engage in physical activity while remaining aware of their bodies and surroundings. This can involve activities like stretching during work breaks or practicing yoga at home. By being present in the moment, individuals can foster a healthier relationship with their bodies and develop a deeper understanding of their physical needs. This practice aligns well with mindful eating, reinforcing the connection between movement and nutrition, and can lead to more conscious choices regarding food intake.

For families, incorporating movement into routines can be both fun and beneficial. Engaging in activities such as family bike rides, playing tag in the backyard, or even dancing in the living room can create enjoyable opportunities for exercise. These shared experiences not only promote physical fitness but also strengthen family bonds, making healthy living a collective goal. Moreover, involving children in these activities can instill an appreciation for movement from a young age, setting a foundation for lifelong healthy habits.

Weight Loss on the Go:

Busy professionals can also find innovative ways to incorporate movement into their workday. Simple strategies include standing or walking meetings, using a stability ball instead of a chair, or taking short movement breaks throughout the day. These adjustments can prevent prolonged periods of inactivity while enhancing productivity and focus. Furthermore, integrating movement into daily tasks, such as walking while on phone calls or doing quick workouts during breaks, can transform a hectic schedule into an active lifestyle without requiring extensive planning or time commitment.



Chapter 6: Healthy Meal Prepping for Weight Loss

The Benefits of Meal Prepping

Meal prepping has emerged as a powerful strategy for busy individuals seeking to maintain a healthy lifestyle amidst their packed schedules. For parents, students, and working professionals, the act of preparing meals in advance can significantly reduce the stress associated with daily cooking and dietary choices. By dedicating a few hours each week to meal prep, individuals can ensure they have nutritious options readily available, making it easier to resist the temptation of fast food or unhealthy snacks. This proactive approach not only saves time but also fosters a sense of control over one's diet, aligning perfectly with the goals of mindful eating practices.

Weight Loss on the Go:

One of the primary benefits of meal prepping is its contribution to sustainable weight loss. When meals are prepared in advance, portion control becomes more manageable. This is particularly beneficial for those practicing intermittent fasting or following low-carb and ketogenic meal plans. By having pre-portioned meals that are aligned with their dietary goals, individuals can avoid overeating or making impulsive food choices that derail their progress. Moreover, meal prepping allows for better tracking of macronutrients, ensuring that individuals stay on target with their nutritional needs while promoting effective weight management.

Meal prepping also enhances family dynamics, making it easier for parents to model healthy eating habits for their children. By involving family members in the meal prep process, parents can instill the values of nutrition and cooking skills in their children, encouraging them to make healthier food choices. This family-friendly approach not only benefits weight loss efforts but also fosters a positive relationship with food. When children participate in meal planning and preparation, they are more likely to enjoy and appreciate the meals served, reducing the likelihood of meal-time battles over unhealthy options.

Weight Loss on the Go:

In addition to the practical benefits, meal prepping can also have a positive impact on mental health. For emotional eaters, having healthy meals readily available can alleviate the anxiety that often accompanies food choices, particularly during busy or stressful periods. Nutrition coaching can further enhance this aspect by providing strategies to address emotional eating triggers, ensuring that individuals make choices that support their mental well-being. The act of preparing meals can also serve as a mindfulness practice, allowing individuals to focus on the present moment and cultivate a deeper connection with their food.

Ultimately, meal prepping is a holistic approach to weight loss that aligns with the demands of busy lifestyles. It combines the principles of nutrition, mental health, and family engagement, creating a sustainable framework for healthy living. By embracing meal prepping, individuals can navigate their weight loss journeys with greater ease, making it possible to enjoy nutritious meals without the daily hassle of cooking and planning. This strategy not only supports weight loss goals but also promotes overall well-being, making it a valuable tool for anyone striving for a healthier lifestyle.

Step-by-Step Guide to Meal Prepping

Meal prepping is a practical and effective strategy for busy individuals looking to maintain a healthy diet while managing their time efficiently. To get started, the first step is to plan your meals for the week. Take a moment to assess your schedule, noting any days when you may be particularly busy or out of the house. Choose recipes that are both nutritious and enjoyable, focusing on a balance of macronutrients that align with your dietary goals. Incorporating low-carb or ketogenic options can be beneficial for those interested in sustainable weight loss, while also ensuring that meals are family-friendly and appealing to all members of the household.

Once you have your meal plan laid out, it's time to create a shopping list. This list should include all the ingredients necessary for your meals, organized by category such as proteins, vegetables, and grains. By shopping with a focused list, you can avoid impulse buys and ensure you're selecting the healthiest options available. When at the grocery store, prioritize whole foods that are minimally processed, as these choices will provide better nutrition and support your weight loss efforts. Consider bulk purchasing non-perishable items, as this can save time and money in the long run.

Weight Loss on the Go:

After shopping, dedicate a specific time for meal prep. This could be on the weekend or any day that suits your schedule. Start by washing and chopping vegetables, marinating proteins, and pre-cooking grains. Batch-cooking these items will allow you to mix and match them throughout the week, creating different meals without starting from scratch each time. For those following intermittent fasting, having ready-to-eat meals on hand can help you stick to your eating windows without the temptation of unhealthy snacks or takeout.

Storage is another important aspect of successful meal prepping. Invest in high-quality containers that are both microwave and dishwasher safe to make reheating and cleaning easier. Portion out your meals into individual servings to promote mindful eating practices and help manage portion sizes. Label your containers with dates and contents, allowing for easy identification and ensuring that meals are consumed while still fresh. This organization not only streamlines your meal consumption but also reduces food waste, which is an important consideration for both budget and sustainability.

Weight Loss on the Go:

Lastly, incorporate flexibility into your meal prep routine. While having a plan is essential, life can often throw unexpected changes your way. It's important to adapt and adjust your meals based on what's available or what you're craving that week. Allow yourself the freedom to swap ingredients or modify recipes to suit your family's preferences, ensuring that everyone stays engaged and satisfied. By following these steps, you can create a sustainable meal prep routine that supports weight loss goals while fitting seamlessly into your busy lifestyle.

Quick and Healthy Recipes for Meal Prep

Quick and healthy recipes for meal prep can be a game-changer for busy individuals striving to maintain a balanced diet while managing their time effectively. For parents, students, and busy professionals alike, meal prepping not only simplifies daily cooking but also ensures that nutritious options are readily available throughout the week. By dedicating a couple of hours on the weekend or during a less hectic day, you can prepare several meals that align with your dietary goals, whether that be low-carb, ketogenic, or simply healthy eating.

Video for how to make a prep meal for a week

https://youtu.be/1N6hbRbyAeQ?si=zg4dFgSwHtIltFl_

For salads prep:

<https://youtu.be/SSuazjGKXiQ?si=jnQvHVBYYyPQi97uw>

<https://youtu.be/SSuazjGKXiQ?si=jnQvHVBYYyPQi97uw>

Weight Loss on the Go:

One of the simplest recipes to incorporate into your meal prep routine is a quinoa salad. Quinoa is a nutrient-dense grain that provides protein and fiber, making it an excellent base for a variety of dishes. To prepare, cook a large batch of quinoa and mix it with chopped vegetables such as bell peppers, cucumbers, and cherry tomatoes. Add a protein source like grilled chicken or chickpeas for added satiety. A light vinaigrette made from olive oil, lemon juice, and herbs can enhance the flavor without adding unnecessary calories. This salad can be stored in the refrigerator for up to five days, making



it an ideal option for lunches or quick dinners.

Weight Loss on the Go:

Another quick meal prep idea is to create mason jar salads. Layering ingredients in jars not only keeps them fresh but also makes for a visually appealing presentation. Start with dressing at the bottom to prevent sogginess, followed by hearty vegetables like carrots and cucumbers, then grains such as brown rice or farro, and finally your choice of greens. Top with a protein like grilled tofu or turkey. When ready to eat, simply shake the jar to mix the ingredients. This method provides a balanced meal that is easy to grab on busy mornings or during lunch breaks.

For those following intermittent fasting or low-carb diets, preparing protein-rich snacks can help curb cravings and maintain energy levels. Hard-boiled eggs, roasted nuts, or Greek yogurt with berries are excellent options. These snacks are not only quick to prepare but also rich in nutrients that support weight management. Portioning these snacks into grab-and-go containers can prevent mindless eating and keep you on track with your nutritional goals, especially during busy workdays.

Weight Loss on the Go:

Lastly, consider batch-cooking healthy soups or stews that can be easily reheated throughout the week. Soups made with lean proteins, legumes, and a variety of vegetables can be low in calories yet high in satisfaction. They also offer flexibility, allowing you to adjust ingredients based on seasonal produce or personal preferences.

Freezing individual portions can ensure you always have a wholesome meal ready, reinforcing your commitment to healthy eating amidst a hectic lifestyle. By integrating these quick and healthy recipes into your meal prep routine, you can support your weight loss goals while enjoying delicious, nutritious meals.

Chapter 7: Nutrition Coaching for Emotional Eaters

Understanding Emotional Eating

Emotional eating is a complex phenomenon that affects many individuals, particularly busy professionals juggling multiple responsibilities. It refers to the practice of consuming food in response to feelings rather than hunger. This behavior can stem from various emotions, including stress, anxiety, boredom, and even happiness. For parents and adolescents, the pressures of daily life can trigger emotional eating, often leading to unhealthy food choices that complicate weight management efforts. Understanding the underlying causes of emotional eating is crucial for developing effective strategies to combat it and promote healthier habits.

Weight Loss on the Go:

The relationship between emotions and eating can be influenced by several factors, including individual experiences and environmental cues. For instance, a stressful day at work might lead a clerk or a student to seek comfort in snacks or fast food, creating a cycle of temporary relief followed by guilt or regret. Recognizing these triggers is the first step in addressing emotional eating. Mindful eating practices, which encourage individuals to pay attention to their eating habits and feelings, can be particularly beneficial. By being aware of what they eat and why, individuals can make more conscious choices that align with their weight loss goals.

Furthermore, the impact of emotional eating on nutrition cannot be overstated. Many people turn to high-calorie, low-nutrient foods during emotional crises, which can derail efforts to adopt healthier meal plans, such as low-carb or ketogenic diets. For busy professionals, meal prepping can be a powerful strategy to mitigate the temptation of emotional eating. By preparing healthy meals in advance, individuals can ensure they have nutritious options readily available, reducing the likelihood of impulsive eating in response to emotional triggers.

Weight Loss on the Go:

Family dynamics also play a significant role in emotional eating. Parents must navigate their own emotional responses while modeling healthy behaviors for their children. Encouraging family-friendly healthy weight loss strategies can help create a supportive environment where emotional eating is recognized and addressed collectively. Engaging in activities like cooking together or participating in functional fitness can foster healthy relationships with food and exercise, making it easier for families to manage stress without resorting to unhealthy eating habits.

Ultimately, addressing emotional eating requires a holistic approach that includes both nutrition coaching and mental health support. Understanding the psychological aspects of eating can empower individuals to seek healthier coping mechanisms. By combining mindfulness, meal planning, and emotional awareness, busy professionals, parents, and students can cultivate a healthier relationship with food. This multifaceted strategy not only aids in weight loss but also contributes to overall well-being, making it an essential component of a sustainable lifestyle.

Weight Loss on the Go:

Strategies for Breaking the Cycle

In the journey of weight loss, breaking the cycle of unhealthy habits is crucial, especially for busy professionals who juggle various responsibilities. One effective strategy is to adopt **intermittent fasting**, which allows for flexibility in meal timing. By designating specific windows for eating, individuals can reduce calorie intake without feeling deprived. This method not only simplifies meal planning but also helps the body enter a state of ketosis, where it burns fat for energy. As a result, busy parents and professionals can find a sustainable approach that accommodates their hectic lifestyles while promoting weight loss.

Mindful eating practices serve as another powerful tool in breaking unhealthy patterns. By fostering awareness around food choices, individuals can learn to listen to their bodies and recognize true hunger cues. This approach encourages slower eating, savoring each bite, and being present during meals. Parents can instill these habits in their children, promoting a healthier relationship with food from a young age. Incorporating mindfulness into daily routines, such as taking a moment to breathe before meals, can significantly impact overall food consumption and enhance weight management efforts.

Weight Loss on the Go:

Low-carb and ketogenic meal plans offer a structured yet flexible way to achieve weight loss goals. These plans focus on reducing carbohydrate intake while emphasizing healthy fats and proteins. For busy professionals, this can mean preparing quick, nutritious meals that are satisfying and easy to prepare. Incorporating family-friendly recipes can make it easier to engage children and partners in the process, turning meal preparation into a shared activity. This not only promotes healthier eating habits within the family but also reinforces the commitment to a low-carb lifestyle.

Functional fitness is another essential strategy for busy individuals looking to break the cycle of sedentary behavior. By incorporating exercises that mimic daily activities, individuals can improve strength, flexibility, and endurance. Short, high-intensity workouts can be easily squeezed into a packed schedule, making it feasible for parents and professionals alike. These workouts can be done at home or in the office, allowing for greater consistency and effectiveness. Engaging the entire family in physical activities can further enhance the commitment to fitness, fostering a supportive environment for weight loss.

Weight Loss on the Go:

Lastly, **healthy meal prepping** is a fundamental practice for sustainable weight loss. Setting aside time each week to prepare nutritious meals can eliminate the temptation of unhealthy convenience foods. Busy parents can involve their children in the meal prep process, teaching valuable cooking skills and encouraging healthy eating habits. Utilizing simple recipes that cater to everyone's preferences ensures that meals are not only healthy but also enjoyable. Additionally, nutrition coaching can provide personalized support for emotional eaters, addressing underlying issues that may contribute to weight gain. By combining these strategies, individuals can effectively break the cycle of unhealthy habits and create a lasting foundation for weight loss success.

Weight Loss on the Go:

Working with a Nutrition Coach

Working with a nutrition coach can be a transformative experience for individuals seeking to achieve sustainable weight loss, especially for busy professionals such as parents, students, and clerks. A nutrition coach provides personalized guidance tailored to individual needs, helping clients navigate the complexities of food choices and lifestyle changes. This collaboration allows for the development of tailored meal plans, whether one is interested in intermittent fasting, low-carb diets, or ketogenic meal strategies. The coach's expertise can simplify the process, making healthy eating more accessible and manageable for those juggling multiple responsibilities.

One of the primary benefits of enlisting a nutrition coach is the emphasis on mindful eating practices. Many individuals struggle with emotional eating or mindless snacking, often leading to weight gain and unhealthy habits. A nutrition coach can help clients become more aware of their eating behaviors, guiding them to make conscious food choices. Through techniques such as journaling or structured meal planning, clients learn to listen to their bodies and recognize hunger cues, which is essential for maintaining a healthy weight amidst a busy lifestyle.

Chapter 8: Weight Loss for Busy Professionals

Common Challenges Faced by Busy Professionals

Busy professionals frequently encounter a myriad of challenges that complicate their weight loss journeys. Time constraints are often at the forefront, as balancing work, family obligations, and personal commitments leaves little room for self-care. This scarcity of time can lead to poor dietary choices, such as opting for fast food or skipping meals entirely. Additionally, the hectic pace of daily life can result in inconsistent eating habits, making it difficult to maintain a steady routine that supports weight management.

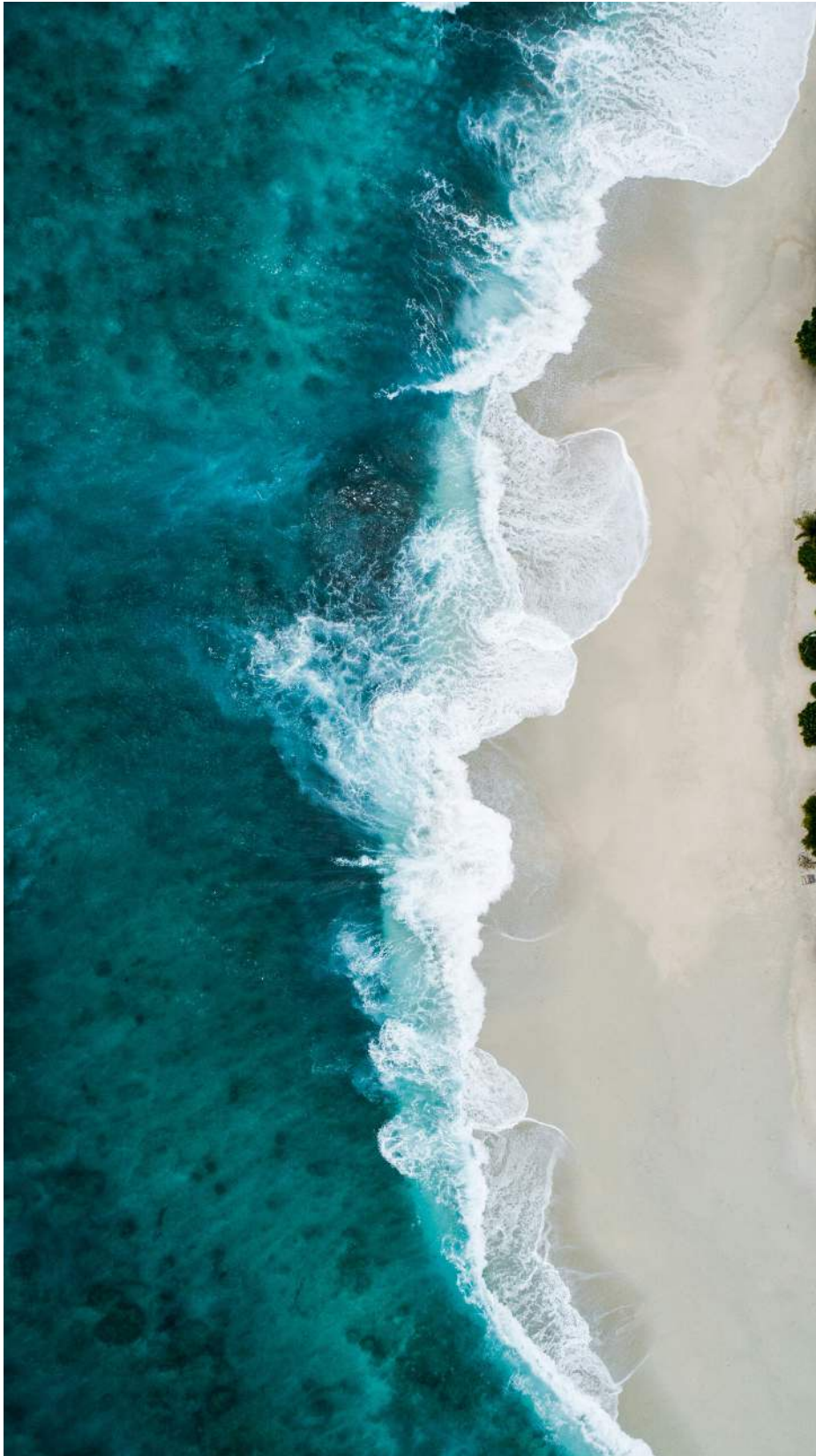
Another significant challenge is the prevalence of stress in professional environments. Many busy individuals turn to food for comfort during high-pressure situations, leading to emotional eating. This tendency not only hampers weight loss efforts but can also contribute to a cycle of guilt and frustration. Recognizing the emotional triggers that drive unhealthy eating patterns is essential for developing effective strategies to combat this issue. Mindful eating practices can be particularly beneficial, helping individuals to cultivate awareness of their food choices and emotional states.

Weight Loss on the Go:

Physical activity is often compromised due to demanding schedules, making it challenging to incorporate regular exercise into daily routines. For busy professionals, finding time for traditional workouts may seem impossible, which can lead to feelings of defeat regarding weight loss goals. However, adopting functional fitness approaches can provide a solution. These workouts can be integrated into daily activities, allowing individuals to stay active without the need for extensive time commitments at the gym.

Meal preparation presents another common hurdle. Preparing healthy meals can seem overwhelming for those juggling numerous responsibilities. The temptation to rely on processed foods or takeout becomes stronger when time is limited. However, establishing a consistent meal prepping routine not only saves time but also ensures access to nutritious options throughout the week. Families can benefit from this approach by involving children in the meal preparation process, fostering healthy habits while also strengthening family bonds.

Weight Loss on the Go:



Weight Loss on the Go:

Lastly, the lack of personalized nutrition support can hinder progress. Busy professionals may not have the resources or knowledge to navigate the complexities of dietary needs effectively. Nutrition coaching can play a pivotal role in guiding individuals through tailored strategies that address their unique circumstances. This support can empower busy individuals to make informed choices, ensuring they remain committed to their weight loss goals while managing their multifaceted lives. By addressing these common challenges, busy professionals can create sustainable weight loss strategies that align with their lifestyles.



Chapter 9: Medical support.

BMI is a simple screening tool that uses your weight and height to categorize whether you're underweight, normal weight, overweight, or obese.

Starting this chapter decisions on what should be done is based mainly on BMI (body mass index) it can be calculated easily by the simple equation

BMI = Weight in kilograms/Height square in meters.

It is considered to be normal around 25, starting 27 medications or simple non invasive interventions can be done.

Common BMI categories (WHO/CDC guidance, adults):

Underweight: $BMI < 18.5$

Normal weight: $18.5 \leq BMI < 25$

Overweight: $25 \leq BMI < 30$

Obese: $BMI \geq 30$

Limitations of BMI:

BMI doesn't distinguish between muscle and fat. It doesn't account for distribution of fat, age, sex, or ethnicity.

Can be less accurate for athletes or people with high muscle mass.

In body measurements can give wider assessment.

Medications:

Orlistat tablets is a simple over the counter medication which is FDA approved for weight loss that works by decreasing the amount of fat absorbed. To be taken 3 times daily before fatty meals. Unfortunately, the average weight loss is only 5% Liraglutide injection is a simple at home way to achieve weight loss. FDA approved 2014 to treat diabetes type 2. It works by increasing insulin production, slows down the stomach emptying that helps regulating fullness. It is administered once-daily subcutaneously at starting dose of 0.6 mg and with the achievement of 3.0 mg in two months from the starting therapy. The the efficacy (weight loss 5-10%) and safety of liraglutide in real-life patients is valid for some, but temporary and costly.

More recently & more effective is Semaglutide which belongs to a class of medications known as glucagon-like peptide-1 receptor agonists, or GLP-1 RAs. It mimics the GLP-1 hormone, released in the gut in response to eating. One role of GLP-1 is to prompt the body to produce more insulin, which reduces blood sugar (glucose).

Weight Loss on the Go:

For that reason, health care providers have used semaglutide for more than 15 years to treat Type 2 diabetes. But GLP-1 in higher amounts also interacts with parts of the brain that suppress your appetite and signal you to feel full. When used in conjunction with diet and exercise, it can cause significant weight loss.

Indicated in combination with a reduced calorie diet and increased physical activity to reduce Excess body weight and maintain weight reduction long term in adults with obesity (BMI ≥ 30 kg/m²) or who are overweight (BMI ≥ 27 kg/m²) in the presence of at least 1 weight-related comorbid condition Risk of major adverse cardiovascular (CV) events (CV death, nonfatal myocardial infarction, or nonfatal stroke) in adults with established CV disease and either obesity or overweight.

Limitations of use:

Ozempic sub-cutaneous injections, or oral tablets Rybelsus, semaglutide is not a substitute for insulin Not indicated for type 1 diabetes mellitus or for treatment of diabetic ketoacidosis, as it would not be effective in these settings.

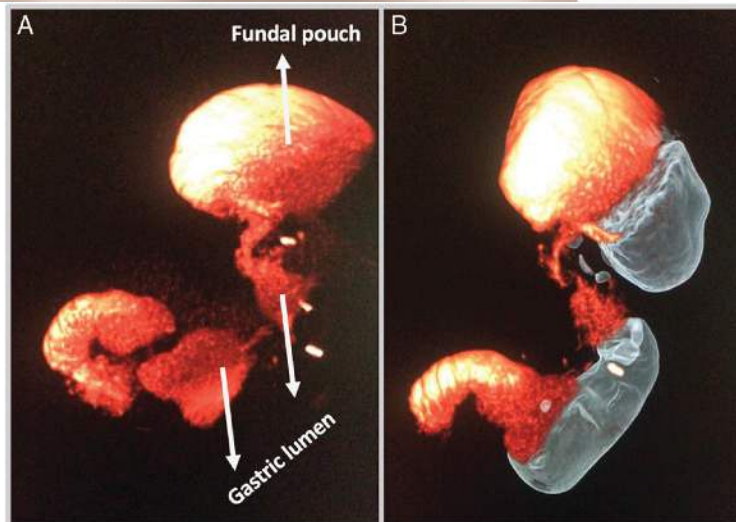
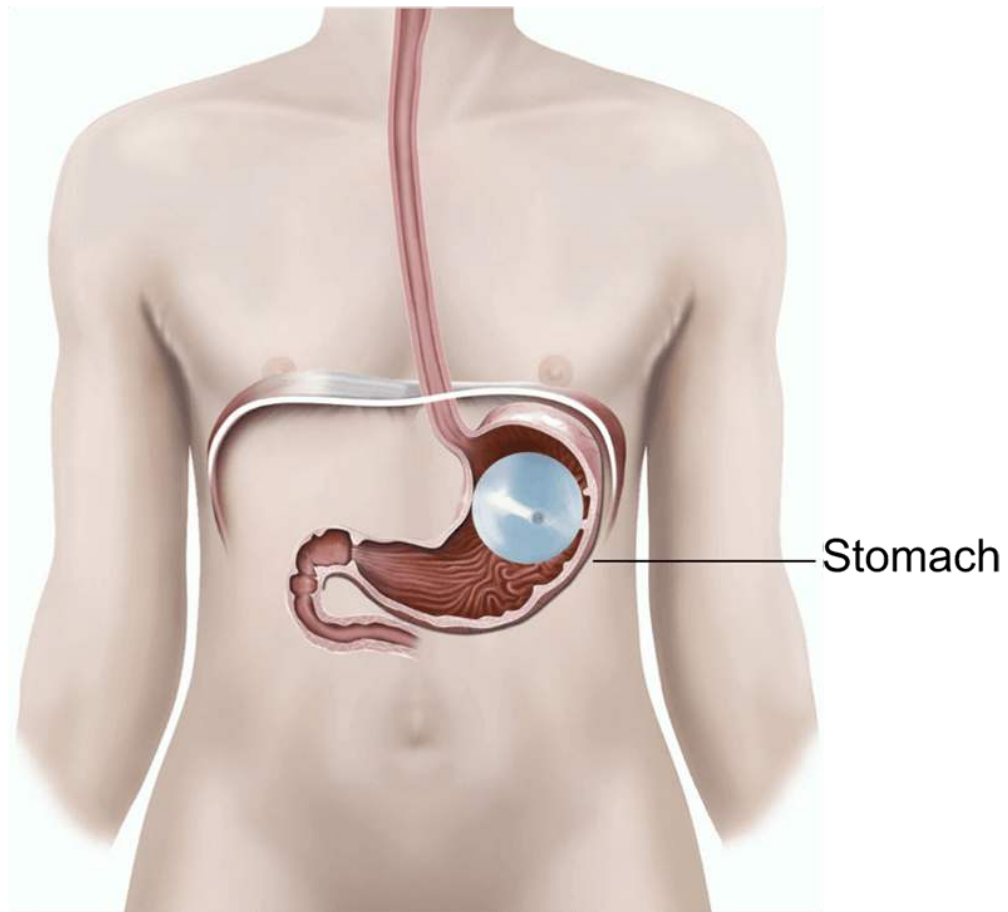
Wegovy (weight management) Contains semaglutide and should not be co-administered with other semaglutide-containing products or with any other GLP-1 receptor agonist.

Non - invasive interventions:

Intra-gastric balloon:

This can be reserved for those who seek a simple non invasive rapid (mostly temporary) way to achieve weight loss. Intra gastric balloon can be delivered through the gastroscope (non invasive) that can be done in one hour and lasts for 6 to 12 months. This can reduce about 15 kilo-grams of body weight. One of its major disadvantages is its temporary and can lead to repeated vomiting with bad impact on the gastric mucosa leading to erosions or ulcers and sometimes perforations. Weight regain can happen after balloon removal.

Weight Loss on the Go:



Weight Loss on the Go:

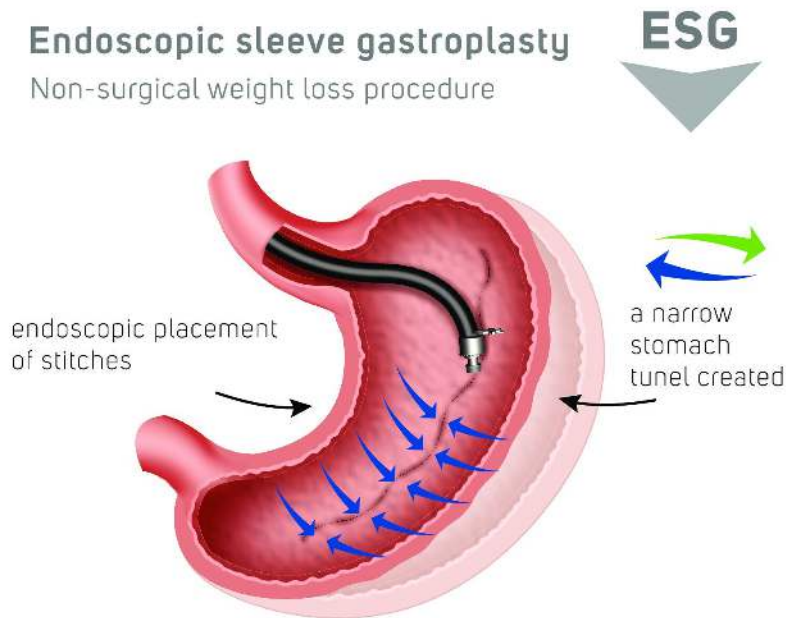
Endoscopic bariatric therapies are emerging as valuable alternatives for patients with doubts about bariatric surgery or ineligible for it. Endoscopic sleeve gastroplasty (ESG), a relatively novel technique of endoscopic bariatric therapies, has gained standing in the past few years. The safety, feasibility, repeatability, and potential for reversibility of ESG have been proven. Compared to other weight loss strategies, current evidence demonstrates that ESG offers mild efficacy in weight loss. Even though it is inferior to laparoscopic sleeve gastrectomy, it has lower risks of adverse events than surgical interventions and intragastric balloon within one-year follow-up. Furthermore, ESG may be the ideal weight control strategy for patients who have poor adherence to behavioral interventions. also, maintaining the whole gastric mucosa functioning, which is important for vitamin absorption. It decreases the gastric volume by endoscopic stitches via the gastroscope (non invasive procedure).

Even so, trends in decreased weight loss effect over time, post-procedure weight regain, post-procedure gut hormone alteration, and possible effects of race and ethnicity on ESG still remain undetermined, also its limitation to access the gastric fundus due to technical issues, makes it a relatively weak modality.

Weight Loss on the Go:

Plenity:

Another non-metabolic way that is actually a pill (capsule) that is taken daily with lunch & dinner. These capsules release thousands of particles that swell and enlarge in the stomach. In the intestine they increase the sense of fullness, hence losing weight. With diet & exercise weight loss can be up to 10% of body weight.



Chapter 10: Interventions.

Weight Loss on the Go:

Involving surgery?!

obesity has been increasing at an alarming rate over the past 50 years. In 2014, obesity and its comorbidities accounted for more than 14 percent of healthcare expenditure world wide.

Weight loss surgery is considered a safe and durable treatment option for obesity. The techniques have been continuously evolving to yield better outcomes. In the last three decades laparoscopic procedures have gained popularity over general surgery, due to small incisions, muscle non-cutting and early recovery.

Some of the previously done procedures are nearly obsolete today due to the side effects as lap band, in surgery as vertical banded gastroplasty.

Sleeve gastrectomy?!

is a surgical weight-loss procedure that involves removing about 80% of the stomach, leaving a tube-shaped stomach about the size and shape of a banana. It can be done for patients of **BMI 30 or higher** preferably not in teen agers.

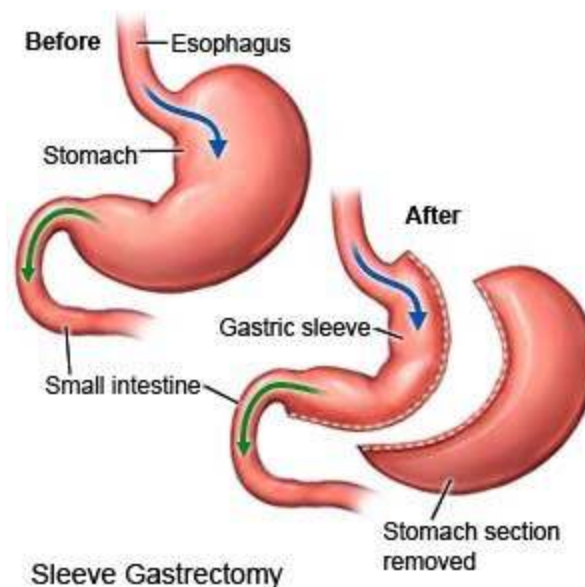
Weight loss is affected not only through the reduction of the organ's size, but by the removal of the portion of it that produces ghrelin (mainly the gastric fundus), the hormone that stimulates appetite. Patients can lose 50-70 percent of excess weight over the course of the two years that follow the surgery.

Weight Loss on the Go:

The procedure is irreversible, though in some uncommon cases, patients can regain the lost weight (usually 5 years), via resumption of poor dietary habits, or dilation of the stomach over time, which can require gastric sleeve revision surgery to either repair the sleeve or convert it to another type of weight loss method that may produce better results, such as a gastric bypass or duodenal switch.

Not surprisingly that sleeve gastrectomy is one of the world wide number one procedure practiced for laparoscopic weight loss.

Sleeve gastrectomy was originally performed as a modification to another bariatric procedure, the duodenal switch, and then later as the first part of a two-stage gastric bypass operation on extremely obese patients.

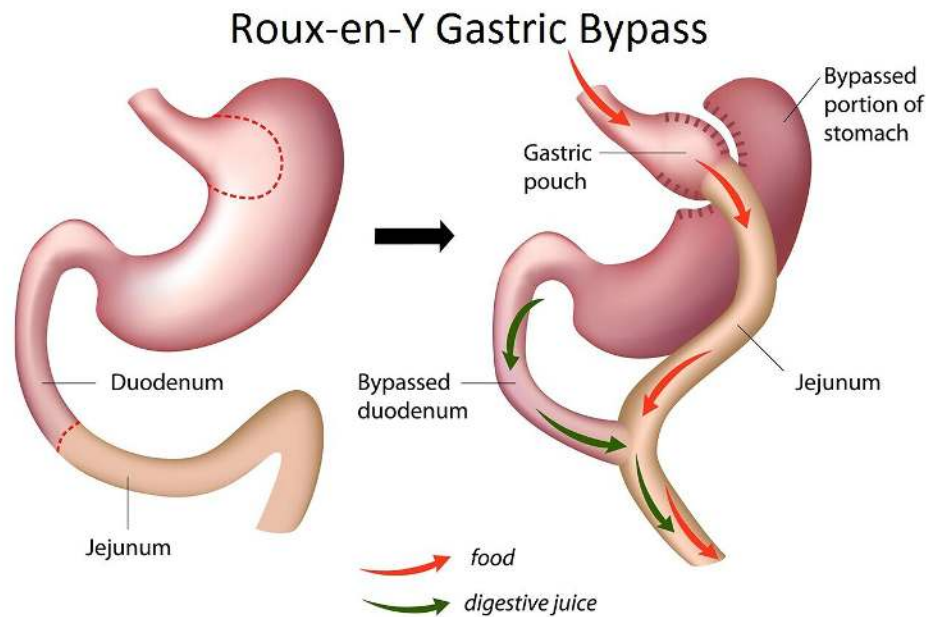


Weight Loss on the Go:

sleeve gastrectomy complications can be devastating. Currently, the 30-day morbidity and mortality of laparoscopic sleeve gastrectomy in the literature range from 0-17.5% and 0-1.2%, respectively. Early complications are mainly hemorrhage & leaks. Later stricture or gastro-esophageal reflux can occur in addition to nutritional deficiencies due to gastric mucosal resection that aids in many vitamins absorption (as the well studied vitamin B) in the same way many other vitamins, in addition to its acid level that is important for protein absorption leading to wasting and decreased proteins (albumin) also, in inbody.

In spite of this procedure results can be non satisfactory leading to more aggressive maneuvers as bypass procedures (Roux -y, one anastomosis gastric bypass, biliary-pancreatic diversion, scopinaro .. etc.). Those techniques can have better outcomes in terms of weight loss, but with more side effects (early & late), that's why its reserved for people with higher BMI (more than 35).

Weight Loss on the Go:



Reduction of the functional gastric pouch can reduce the crave also the bypass serves in malabsorption of food supplied, but still a blind loop of the rest of the stomach can have its side effects.

One can choose among these various modalities what is best for his/her life style after consulting a bariatric surgeon.

Weight Loss on the Go:

A recent approach that can have both advantages of gastric size restriction and malabsorption of fat and sugars is the Modified Gastric Plication (SAPI- Single Anastomosis Plication Ileal bypass). This technique has the merit of no gastric or intestinal resection, no staples, only laparoscopic suturing to reduce the gastric size while keeping the whole gastric mucosa functioning & not in a blind loop form (as in roux-Y gastric bypass or mini gastric bypass), no change for the gastric acidity (the whole gastric mucosa is intact & functioning in full power), safer, as much less leaks or any major complications as bleeding, also doesn't need post operative vitamins as the vitamin pathway is intact. Having an additional gastric outlet to the normal one enhances gastric motility (emptying) & makes it very difficult for gastric re-distensibility & weight regain.

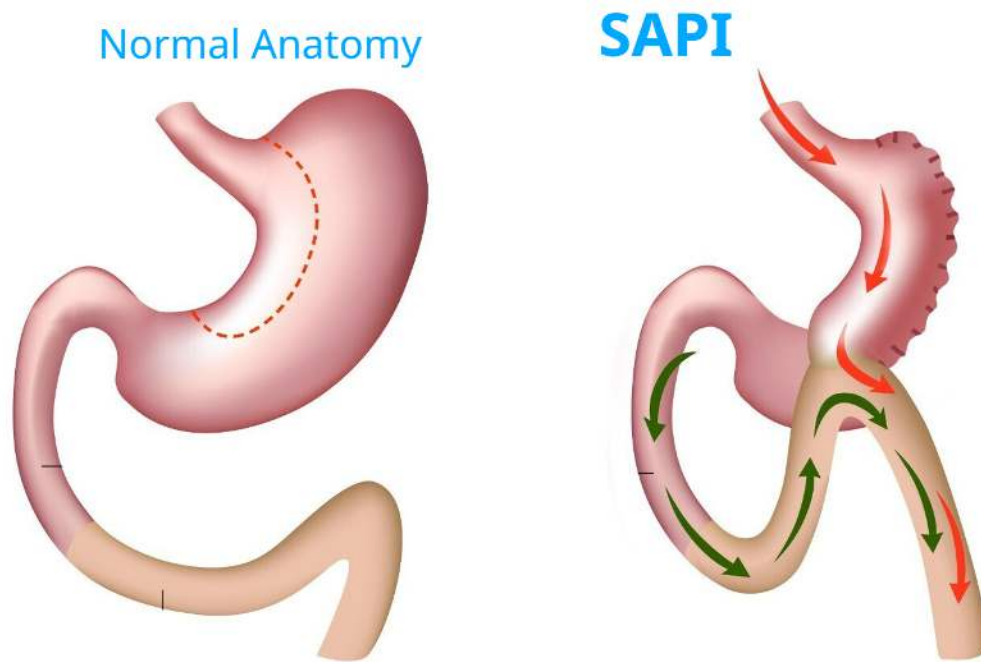
In this way, SAPI procedure is safer and more economic on the short scale (no vitamins or supplements needed), on the long scale it leads to a more healthy and energetic life style.

Weight Loss on the Go:

Also, reduction of GERD (Gastro Esophageal Reflux Disease) symptoms, as the inner gastric folds reduce the acid return to the esophagus, the anastomosis mixing alkaline biliary-pancreatic juice to the acidic stomach juice makes the over all gastric juice less acidic . An extra-benefit, that it actually decreases the glycated hemoglobin (Hba1c) used to monitor diabetic patients. Doing so, leads to much better improvement for young patients with diabetes mellitus. It is considered one of the few fully reversible bariatric procedures, so that the young adult after achieving the desired weight, can perform another operation to revert this procedure. Intact gastric mucosa, that is fully in use & functioning, with no blind loops leads to healthy weight loss with no vitamin loss, anemia, emaciation and hair loss, as compared to other bariatric procedures.

For all these merits, it can be used for BMI 28 or higher (which are just overweight subjects), mainly in teen agers, or adolescents.

Weight Loss on the Go:



On average, by one year, gastric bypass patients lost 34% approximately of their initial body weight. In addition to gastric size reduction, gastric bypass reduces ghrelin (a hunger hormone secreted by the stomach), also increases posterior gut hormones as GLP-1 & PYY which both increase the sense of fullness after eating. These procedures have little rate of known complications including bleeding, leaks, infections, vitamin deficiencies..., but also modulate the Gut-Brain axis leading to a new set point for the body weight.

Follow up after bariatric procedures:

Post operative regimens are very important after bariatric interventions.

During your first week after surgery, you will be restricted to clear liquids. In addition to water, you can drink clear broth, decaffeinated beverages, and the sugar-free versions of drink mixes like Kool-Aid and Crystal Light. Forgo carbonated beverages, caffeine, and anything with added sugar.

The second week will see the addition of thicker liquids to your post-op diet. These might include such items as applesauce, cream of wheat, Greek yogurt, protein shakes, and sugar-free ice creams and puddings. All liquids should be completely smooth with no bits or lumps. Start with sips (little and often), and if you feel comfortable then gradually increase the amount. Avoid big gulps as this may cause discomfort, nausea, sickness and regurgitation. Choose liquids that are high in protein to help you to meet your protein requirements.

Weight Loss on the Go:

The average recommendation is 70-100g each day. Aim to have 1.5-2 litres of fluids each day to stay hydrated. Always prioritise protein rich fluids over others such as tea, coffee etc. Begin with sipping your drinks little and often and gradually increase the quantity until the sensation of feeling full occurs. It is important to stop as soon as you feel full. If you drink too much, your stomach may overflow and cause pain, nausea and vomiting.



Weight Loss on the Go:

Which liquids are suitable? Choose protein rich liquids at least 1 litre (2 pints) each day to help your body recover such as: Skimmed or semi-skimmed milk (try adding dried skimmed milk powder or protein powder)

High protein shakes Slimfast Low-fat natural or plain yoghurt drinks
Complan soup Meritene soup Protein Water Other fluids you can have: Still water Marmite®, Bovril®, consommé, bouillon Clear soups Herbal or fruit teas Tea and coffee (use sweeteners, not sugar) No added sugar/sugar free squash Sugar free jelly Diluted vegetable juice (no bits) Fluids to avoid: Fruit juices, malt drinks and fruit smoothies Fizzy drinks (including fizzy water) as the gases may cause bloating, pain and can increase stomach size. All Soft and pureed foods come next at the third week.

Weight Loss on the Go:

It's better to have 1.5-2 liters of fluids each day. Aim for at least 1 litre (2 pints) of milk based fluids (see list of protein rich fluids above) and always prioritise protein rich fluids over others such as tea, coffee etc. Begin with sipping your drinks little and often and gradually increase the quantity until the sensation of feeling full occurs. It is important to stop as soon as you feel full. If you drink too much, your stomach may overflow and cause pain, nausea and vomiting.

Examples include eggs, ground meats, fish, beans, cooked vegetables, and soft fruits. Other possibilities include hummus and cottage cheese. Solid foods are finally back in the fourth week after surgery. At this point, the post-op diet is similar to your presurgical diet.

Certain items remain off limits: fried foods, candy, nuts, seeds, whole dairy products, breads, pastas, and fibrous vegetables such as broccoli. You are allowed to reintroduce caffeine, but only in small quantities. Over time, you can add some of the excluded items above but always as small portions. Your focus should remain on lean protein, complex carbohydrates, and healthy fats. Avoid processed foods and sugar-added products. Eat slowly, chew thoroughly, and stop eating when you stop feeling hungry.

Weight Loss on the Go:

Incorporating functional fitness into a busy schedule can also aid in weight loss and prevents weight regain. Rather than setting aside long blocks of time for workouts, individuals can integrate short bursts of physical activity into their day. For instance, parents can engage in family-friendly activities like playing outside or taking brisk walks after dinner. Students can utilize breaks between classes for quick exercises or stretches, while professionals can opt for standing desks or take the stairs. These small adjustments can lead to significant health benefits over time, proving that even the busiest lifestyles can accommodate fitness.

The root causes for **weight recurrence** are highly variable, which includes socioeconomic status, physical, physiological, dietary, and pathological factors, which may also be procedure-specific. Little information is currently available about how to anticipate and treat all the patients who regain their former weight.

The standard method would be to warn patients on the possibility of weight recovery and to be aware of the potential solutions if it happens. The management includes multidisciplinary counselling and requisite one or more revision or conversion surgeries.

Weight Loss on the Go:

Mindful eating practices also play a significant role in post-operative weight management, especially for those with hectic schedules. Taking the time to be present during meals can help individuals recognize true hunger cues and differentiate between emotional and physical eating. Simple techniques such as eating without distractions, savoring each bite, and assessing hunger levels before reaching for food can significantly impact portion control. Busy professionals, students, and parents can benefit from incorporating mindful eating into family meals or even during quick lunches at work, fostering healthier relationships with food and reducing the likelihood of overeating.

Lastly, nutrition coaching for emotional eaters can provide valuable support in managing weight. Individuals struggling with emotional eating often find it challenging to prioritize healthy choices amidst their busy lives. Seeking guidance from a nutrition coach can help develop personalized strategies that fit into their schedules, such as identifying triggers and creating actionable plans for healthier coping mechanisms.

Weight Loss on the Go:

This holistic approach mainly in the post operative period not only addresses dietary habits but also emphasizes the importance of mental health in the weight loss journey, making it easier for busy individuals and families to adopt sustainable practices that promote overall well-being.

Creating a Supportive Environment

Creating a supportive environment is essential for anyone seeking to achieve sustainable weight loss, especially busy professionals juggling multiple responsibilities. A supportive environment encompasses not only the physical space but also the social and emotional contexts in which individuals operate. For parents, adolescents, clerks, housewives, and students, establishing an environment that fosters healthy habits can enhance motivation and make weight loss more manageable. By cultivating a setting that encourages healthy choices, individuals can significantly improve their chances of success in their weight loss journeys.

One key aspect of a supportive environment is the role of family and social networks. For busy parents and students, enlisting the support of family members can create a collective commitment to healthier living. Starting your weight loss journey through bariatric surgery is a huge decision that brings about transformative results. Yet, the path to sustainable success is not just about the surgery itself; it involves a lifestyle shift that needs dedication and support. From day-to-day life to significant milestones, having a reliable support network can make all the difference in ensuring long-term success.

Weight Loss on the Go:

Support groups can play a significant role in the success of weight loss surgery. Here's how it can impact your journey:

Emotional well being: Sharing experiences, challenges, and triumphs within a support group helps give you a sense of belonging and understanding, combating those feelings of isolation or loneliness.

Accountability: Knowing that you're accountable to a group can be a powerful motivator, keeping you on track with your goals even when faced with temptation.

Motivation and Encouragement: Members of a support group uplift and inspire one another, providing a continuous source of motivation to stay committed to your weight loss journey.

Information Sharing: Support groups become a great way to find practical tips from those on a similar journey to you.

Mental health plays a crucial role in weight management, and a supportive environment should address emotional well-being. For emotional eaters, establishing a space for mindfulness practices can be beneficial. This may include setting aside time for meditation, journaling, or engaging in hobbies that reduce stress.

Weight Loss on the Go:

Encouraging positive self-talk and body positivity within the home can also foster a healthier relationship with food and self-image. By addressing mental health in the context of weight loss, individuals can cultivate resilience against emotional eating triggers.

Lastly, continuous education and resources contribute to a supportive environment. For parents, adolescents, and busy professionals, access to nutrition coaching and workshops on healthy eating strategies can provide valuable knowledge and skills. Participating in community groups or online forums focused on weight loss can also offer encouragement and practical tips. By surrounding themselves with resources and individuals who share similar goals, individuals can reinforce their commitment to health and weight management, making the journey more enjoyable and successful.

video for how to exercise after bariatric surgery

https://youtu.be/jHat2OLQYLw?si=K0f_F58IWCAOnZQM

https://youtu.be/jHat2OLQYLw?si=K0f_F58IWCAOnZQM

Chapter 11: Family-Friendly Healthy Weight Loss Strategies

Involving the Whole Family in Healthy Eating

Involving the whole family in healthy eating is essential for fostering an environment where nutritious choices are prioritized and supported especially in the post operative period. When families come together to embrace healthy eating habits, it not only enhances individual well-being but also strengthens family bonds. Parents play a crucial role in modeling healthy behaviors, which can significantly influence the eating habits of children and adolescents. By engaging every family member in discussions about nutrition, meal planning, and food preparation, families can create a collective commitment to healthier lifestyles that extend beyond individual choices.

One effective strategy is to involve everyone in meal planning and grocery shopping. This process allows family members to express their preferences and learn about nutritious options together. By creating a weekly menu that includes a variety of healthy recipes, families can explore new foods and flavors while ensuring that meals are balanced and satisfying.

Weight Loss on the Go:

Involving children in selecting fruits, vegetables, and whole grains can also empower them to make healthier choices, both at home and when they are away. Additionally, grocery trips can become educational experiences, where parents can teach their children about reading labels, understanding portion sizes, and making smart food choices.

Bariatric surgery is a transformative journey, offering patients a pathway to significant weight loss and improved health. However, the journey doesn't end with surgery; it requires ongoing lifestyle changes and emotional support. One of the most critical aspects of this post-surgery journey is having a strong support system, particularly peer support. One of the primary benefits of peer support is the emotional backing it provides.

Undergoing bariatric surgery can be an emotional rollercoaster. Patients often face anxiety, depression, and other emotional challenges. Connecting with peers who have undergone similar experiences can offer comfort and motivation. Sharing stories, struggles, and successes can create a sense of belonging and understanding that is crucial for emotional well-being.

Weight Loss on the Go:

Peer support groups provide a platform for accountability. Regular meetings or check-ins with peers can help patients stay on track with their diet, exercise, and lifestyle goals. When patients know they have to report their progress to a group, they are more likely to adhere to their plans. Moreover, seeing others succeed can be incredibly encouraging and can inspire patients to push through their own challenges.

Post-bariatric life involves many changes, from dietary adjustments to new exercise routines. Peers who have been through the same process can offer invaluable practical advice. Whether it's tips on managing portion sizes, recipes for nutrient-rich meals, or strategies for overcoming plateaus, the shared knowledge within a support group can help patients navigate their new lifestyle more effectively.

Isolation can be a significant issue for post-bariatric patients.

Being part of a support group helps build a community where individuals can form friendships and connections that go beyond the weight loss journey. This sense of community can reduce feelings of loneliness and provide a network of people who genuinely understand and support each other's goals.

Weight Loss on the Go:

Types of Peer Support Systems

In-Person Support Groups Many hospitals and clinics offer in-person support groups for bariatric patients. These groups typically meet regularly and provide a structured environment for sharing experiences and advice. In-person meetings can foster deep connections and offer immediate emotional support.

Online Communities For those who cannot attend in-person meetings, online communities can be a lifeline. Platforms like Facebook, Reddit, and specialized forums offer spaces where patients can connect, share their stories, and seek advice. The anonymity of online communities can also encourage more open and honest discussions.

Mentorship Programs Some bariatric programs pair new patients with mentors who have successfully navigated the post-surgery journey. These one-on-one relationships can offer personalized support and guidance, helping new patients adjust to their new lifestyle and overcome challenges.

100 - 118



Weight Loss on the Go:

Mindful eating practices can further enhance family meals by encouraging everyone to pay attention to their hunger cues and the sensory experience of eating. Families can set aside time during meals to discuss the flavors, textures, and colors of their food, promoting an appreciation for nutritious meals. This practice helps to combat mindless eating, which can lead to overeating or unhealthy snacking. By making mealtime a focused experience, families can strengthen their connections with one another while cultivating a healthier relationship with food. Implementing strategies such as eating slowly, minimizing distractions, and enjoying meals together can transform mealtime into an opportunity for bonding and mindfulness.

Weight Loss on the Go:

Finally, addressing emotional eating as a family can create a supportive atmosphere for those who may struggle with weight management. Nutrition coaching can be beneficial, as it can provide families with the tools and knowledge needed to navigate emotional triggers and develop healthier coping mechanisms. Encouraging open conversations about feelings and stress can help family members understand the connection between emotions and eating behaviors. By creating a nurturing environment where everyone feels comfortable discussing their challenges, families can collectively work towards healthier habits and sustainable weight loss. This holistic approach to family nutrition not only promotes physical health but also strengthens emotional resilience and overall well-being.

Healthy Snack Ideas for Kids

Healthy snacks play a crucial role in maintaining energy levels and supporting overall well-being, particularly for children who are constantly on the go. As parents and caregivers, it is essential to provide nutritious options that not only satisfy hunger but also contribute to healthy weight management. Choosing the right snacks can help children develop positive eating habits that last a lifetime. Here are some healthy snack ideas that align with mindful eating practices and are easy to prepare, ensuring your kids enjoy nourishing food without added stress.

Weight Loss on the Go:

One simple yet effective snack idea is sliced fruits paired with nut butter. Fruits like apples, bananas, and pears offer natural sweetness and essential vitamins, while nut butter provides healthy fats and protein, making the snack more satiating. This combination can help stabilize blood sugar levels, reducing cravings for less nutritious options. Additionally, involving children in the preparation process can encourage them to appreciate healthy foods and might even make them more likely to choose these snacks over sugary alternatives.

Vegetable sticks with hummus or yogurt-based dips are another excellent choice. Carrots, cucumbers, bell peppers, and celery are not only colorful but also packed with vitamins and minerals. Hummus, made from chickpeas, is a great source of fiber and protein, promoting fullness. Yogurt dips can add a creamy texture while providing probiotics for gut health. This snack is not only nutritious but also encourages kids to explore different flavors and textures, fostering a positive relationship with vegetables.

Weight Loss on the Go:

For those busy afternoons, trail mix can be a perfect on-the-go option. Creating a homemade trail mix allows for customization according to your children's preferences. Combining nuts, seeds, whole-grain cereals, and a small amount of dried fruit can provide a balanced snack rich in nutrients. This snack is portable, making it easy to pack for school lunches or after-school activities. The healthy fats from nuts and the fiber from whole grains contribute to sustained energy, helping kids stay focused and active.

Lastly, yogurt parfaits can be an enticing and nutritious snack. Layering Greek yogurt with fresh fruits and a sprinkle of granola offers a balance of protein, carbohydrates, and healthy fats. Greek yogurt is an excellent source of protein, which is vital for growth and development in children. By involving kids in the assembly of their parfaits, you can teach them about portion control and the importance of including different food groups in their snacks. This interactive approach not only makes snacking fun but also promotes mindful eating habits.

Weight Loss on the Go:

Incorporating these healthy snack ideas into your children's daily routine can significantly contribute to their overall health and weight management. By focusing on nutrient-dense options, parents can help instill lifelong healthy eating habits. As busy professionals, it can be challenging to find time for meal prep, but these simple snack ideas require minimal preparation and can be easily integrated into your family's lifestyle. Prioritizing healthful snacking can pave the way for a happier and more energetic household.

Balancing Family Meals with Weight Loss Goals

In today's fast-paced world, balancing family meals with weight loss goals can be a challenging yet rewarding endeavor. For parents, students, and busy professionals, the desire to provide nutritious meals for loved ones while also adhering to personal health objectives requires thoughtful planning and mindful practices. Emphasizing the importance of family meals not only fosters connection but also provides an opportunity to instill healthy eating habits in children and adolescents. By integrating weight loss strategies into family dynamics, it is possible to create a supportive environment that encourages everyone to adopt healthier lifestyles.

Weight Loss on the Go:

One effective approach to achieving this balance is through meal prepping, which can significantly streamline the process of preparing healthy family meals. Setting aside a few hours each week to plan and prepare meals allows busy individuals to control portion sizes and make informed nutritional choices. Families can collaborate on this task, turning it into a fun activity that promotes teamwork and healthy eating. By utilizing low-carb or ketogenic meal plans, families can enjoy delicious, satisfying meals that align with weight loss goals while still catering to diverse tastes and preferences within the household.

Mindful eating practices play a crucial role in making family meals conducive to weight management. Encouraging family members to engage fully during mealtimes—by eliminating distractions such as television or smartphones—can enhance the dining experience and promote awareness of hunger and satiety cues. By modeling mindful eating behaviors, parents can teach their children the importance of listening to their bodies and making conscious food choices. This not only aids in weight loss but also cultivates a positive relationship with food that can last a lifetime.

Weight Loss on the Go:

Incorporating functional fitness activities (even in the post-operative period) into family routines can further support weight loss goals while strengthening familial bonds. Families can engage in physical activities together, such as hiking, biking, or even home workout sessions. These shared experiences not only promote health and fitness but also create lasting memories. By prioritizing physical activity alongside family meals, parents can demonstrate the value of a well-rounded approach to health that encompasses both nutrition and exercise.

Lastly, it is essential to recognize the emotional aspects of eating, particularly for those navigating weight loss journeys alongside their families. Nutrition coaching can be beneficial for emotional eaters, helping them develop healthier coping mechanisms and understand the triggers that lead to unhealthy eating patterns. By addressing emotional well-being alongside physical health, families can create a holistic approach to weight loss that nurtures mental health and fosters a supportive environment. This comprehensive strategy not only aids in achieving individual weight loss goals but also reinforces the notion that healthy living is a shared family value.

Chapter 12: Holistic Approaches to Weight Loss

The Connection Between Mental Health and Weight Loss

The connection between mental health and weight loss is increasingly recognized as a crucial factor in achieving sustainable results. For busy professionals juggling various responsibilities, understanding how mental well-being influences weight management can be a game changer.

Stress, anxiety, and depression can lead to unhealthy eating habits, making it challenging to adhere to diets or meal plans. When individuals are emotionally overwhelmed, they may turn to food for comfort, often selecting high-calorie, low-nutrient options that contribute to weight gain rather than loss. Recognizing these patterns is the first step toward establishing healthier habits.

Mindful eating practices can play a significant role in mitigating the impact of mental health on weight loss efforts. By cultivating awareness of hunger cues and emotional triggers (which is usually much less after bariatric surgery but still needs to be considered), individuals can make more conscious decisions about what and when to eat. This approach encourages parents, adolescents, and busy professionals to slow down during meals, savoring each bite, which not only enhances the eating experience but also helps prevent overeating. Mindful eating creates a more positive relationship with food, allowing individuals to distinguish between physical hunger and emotional cravings, leading to healthier food choices.

Weight Loss on the Go:

Nutrition coaching, also post bariatric surgery, can be particularly beneficial for emotional eaters, as it provides personalized guidance tailored to the individual's unique challenges and lifestyle. Coaches can help clients identify triggers that lead to unhealthy eating behaviors and develop coping strategies that do not involve food. This support is essential for busy parents and professionals who may struggle to find the time for self-care. By addressing the psychological aspects of eating, clients can develop sustainable habits that foster both mental health and weight loss.

Incorporating family-friendly healthy weight loss strategies after surgeries can create a supportive environment for everyone involved. When parents model mindful eating and prioritize nutritious meal prep, children and adolescents are more likely to adopt these healthy habits. This holistic approach not only enhances physical health but also promotes a positive family dynamic centered around wellness. By recognizing the intertwined nature of mental health and weight loss, busy individuals can take actionable steps towards achieving their goals while fostering a healthier mindset for themselves and their families.

Stress Management Techniques

Stress can significantly impact weight management, making stress management techniques essential for busy professionals and their families even post bariatric surgery. High levels of stress often lead to emotional eating, where individuals turn to food for comfort. This can result in unhealthy food choices and overeating, ultimately hindering weight loss efforts. Understanding how to manage stress effectively can help individuals make better nutritional choices, adhere to meal plans, and implement healthy lifestyle changes.

One effective technique for managing stress is mindfulness. Mindful eating practices encourage individuals to pay attention to their food and the eating experience. By focusing on the taste, texture, and aroma of food, individuals can cultivate a healthier relationship with their meals. This practice can reduce the likelihood of emotional eating, as it promotes awareness of hunger and satiety cues. Sticking to post bariatric food regimens is crucial.

Weight Loss on the Go:

Incorporating regular physical activity is another key stress management strategy, especially after bariatric surgeries. Functional fitness, which includes exercises that enhance daily activities, can be particularly beneficial for busy individuals. These workouts can be short and efficient, fitting seamlessly into a hectic schedule. Regular exercise not only helps in burning calories but also releases endorphins, the body's natural stress relievers. This dual benefit makes functional fitness a valuable tool for both stress management and weight loss, helping individuals stay on track with their health goals.

This holistic approach to weight loss considers both mental and physical health, empowering individuals to make sustainable changes. By addressing the emotional aspects of eating and providing practical tools for stress management, nutrition coaching can facilitate a healthier mindset, leading to long-term weight management success. A very important aspect in this subject, is to avoid as much as possible all anti-depressant drugs or any mood elevating drugs, as it leads to increased weight via several mechanisms, in addition to gastrointestinal disturbances. Physical methods are far better choice.

Weight Loss on the Go:



Building a Positive Mindset for Sustainable Weight Loss

Building a positive mindset is crucial for achieving sustainable weight loss, particularly for busy professionals and their families. Actually in post bariatric surgeries there is a new Gut-brain axis that needs to be in continues balance & follow up.

Weight Loss on the Go:

A positive mindset not only influences your motivation but also shapes your approach to food, exercise, and lifestyle changes. For parents, adolescents, and students alike, cultivating a mindset that embraces progress over perfection can lead to healthier habits that last a lifetime. By focusing on small, manageable goals and celebrating each achievement, individuals can foster a sense of accomplishment that propels them forward on their weight loss journey.



Chapter 13: Conclusion

Recap of Key Strategies

In the journey toward sustainable weight loss, especially for busy professionals and families, several key strategies have emerged as effective tools. Intermittent fasting has gained popularity for its simplicity and flexibility, allowing individuals to eat within a specified time window. This approach not only aids in calorie control but also encourages a natural rhythm of eating that can fit seamlessly into a hectic lifestyle. By focusing on when to eat rather than what to eat, individuals can simplify their meal planning and reduce the daily stress associated with food choices.

Mindful eating practices play a crucial role in weight management, particularly for those juggling multiple responsibilities. By fostering a greater awareness of hunger and satiety cues, individuals can develop a healthier relationship with food. Mindfulness encourages slowing down during meals, savoring flavors, and appreciating each bite, which can lead to reduced portion sizes and increased satisfaction. This strategy not only supports weight loss but also enhances overall well-being by promoting a positive mindset around food.

Weight Loss on the Go:

Functional fitness is another essential strategy for weight loss, especially for busy professionals who may struggle to find time for traditional workouts. Incorporating functional movements into daily routines—such as squats, lunges, and push-ups—can help build strength and endurance without requiring lengthy gym sessions. This approach can easily be integrated into family activities, making exercise a fun and engaging experience for all members. By focusing on movements that mimic everyday tasks, individuals can enhance their physical fitness while simultaneously working towards their weight loss goals.

Finally, healthy meal prepping is a game-changer for maintaining a balanced diet amid a packed schedule. By dedicating time to prepare meals in advance, individuals can ensure they have nutritious options readily available, reducing the temptation to opt for unhealthy convenience foods. Pairing this strategy with nutrition coaching for emotional eaters can further support long-term success by addressing the underlying emotional factors that influence eating habits.

Weight Loss on the Go:

Medications can be started for BMI more than 27, with guarded approach for side effects & efficacy of the medication.

Similarly non invasive bariatric interventions for the same BMI, stressing on diet control at the same time, mainly low carbs.

For bariatric surgery, should not to be considered below BMI of 30, bearing in mind that this is only a step, not the final step in the management plan.

Creating Your Personalized Weight Loss Plan

Creating a personalized weight loss plan requires a comprehensive approach that considers your unique lifestyle, preferences, and goals. For busy professionals such as parents, students, and clerks, the first step is to assess your current habits and routines, also your body mass index changes as a guide to switch between different modalities including endoscopic or surgical procedures. Setting realistic and specific goals, such as losing a certain amount of weight within a given timeframe, can provide motivation and clarity as you embark on your weight loss journey.

Weight Loss on the Go:



Weight Loss on the Go:

Encouragement for the Journey Ahead

As you embark on the journey of weight loss, it's essential to recognize that this path is not a sprint but a marathon. The commitment to change your lifestyle, especially in the context of a busy life filled with responsibilities like parenting, work, and study, can seem overwhelming. However, with the right mindset and strategies, sustainable weight loss is within reach. Embracing intermittent fasting can provide a flexible approach that fits into even the most hectic schedules. The beauty of this method lies in its simplicity; by designating specific eating windows, you can streamline your meal planning and reduce the temptation to snack mindlessly throughout the day.

Finally, remember that your journey is unique and should be approached holistically. Nutrition coaching can provide personalized strategies, especially for emotional eaters who may require additional support. Integrating mental health practices into your weight loss efforts is crucial, as emotional well-being significantly impacts physical health. By prioritizing self-care and seeking professional guidance when necessary, you can create a balanced approach to weight loss that honors both your mind and body. Embrace this journey with optimism and resilience, knowing that every small step contributes to a healthier, happier you.



Busy family weight loss in a healthy style.

Unhealthy eating habits label busy families. Modern practices and minor changes in lifestyle can overcome overweight side effects.

In this book, the recent role of **epigenetics** is highlighted and how we can benefit in terms of treating obesity. Also, how to change the eating habits, mindful eating, how to prepare healthy meals for the whole family. How limited exercises can also help.

The writer Dr. Aladin Badawy (M.D.), SAGES member (Society of American Gastro-intestinal & Endoscopic Surgeons) is giving a review of successful medications for obesity, applicable non-invasive procedures giving a basic knowledge of common surgical bariatric procedures, guiding a way to what is suitable with pros & cons for everyone.

info@draladdinbadawi.com